



**art**  
**LAMU**  
**2017**







**ADVISE: DONT WORRY JUST  
VISIT V.C.T CENTRE  
EMAIL: faraniza@yahoo.com**




















Lamu is a place like no other. Steeped in the rich history of the monsoon winds, the island has retained its character through the preservation of its culture. Story telling, poetry, music and calligraphy are still highly regarded. The unique Swahili identity is still seen in the architecture and Lamu's arts & craftsmanship. Lamu Town, where echoes of a distant past are heard louder than anywhere else, has been declared a World Heritage Site of UNESCO.

At the beginning of 2017, 23 international artists were invited into this vibrant artistic community. Their mission was to mirror the diversity of Swahili society and the colours of Lamu daily life.

The artists' residency culminated in an exhibition in the imposing Lamu Fort. In conjunction with the art show, Kenyan musicians including Idd Aziz and Labdi performed a free concert in the square. Celebrations for the Lamu Art Festival continued with sunset dhow cruises, music on Manda and the obligatory dhow competition from the legendary Peponi beach – a metaphor for the 'Art of Living' – Lamu style.







Lamu Fort  
February 17th – 19th 2017

Ajax Axe  
Hartmut Beier  
Maina Boniface  
Natalia Dik  
Marc Einsiedel & Felix Jung  
Waweru Gichui  
Eveline van de Griend  
Rob Jacobs  
Nduta Kariuka  
Zihan Kassam  
Ekaterina Mitichkina

Peter Ngugi  
James Njoroge  
Anna Nordenskjöld  
Juliana Oliveira  
Joachim Sauter  
Paul Taylor  
Svetlana Tiourina  
Karin Voogd  
Nadia Wamunyu  
Dale Webster  
Fitsum Berhe Woldebianos

A Project of  
[www.lamupaintersfestival.org](http://www.lamupaintersfestival.org)









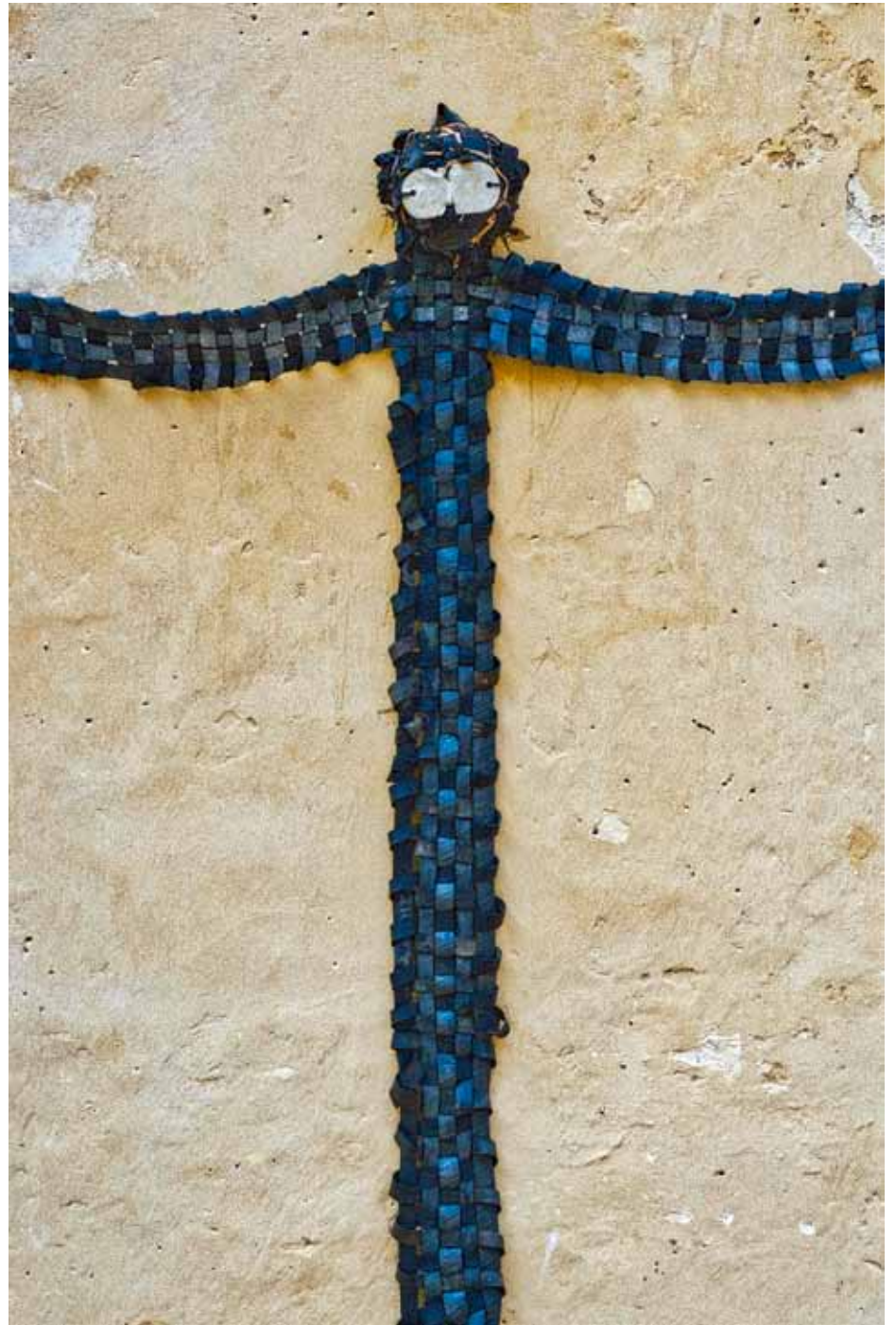




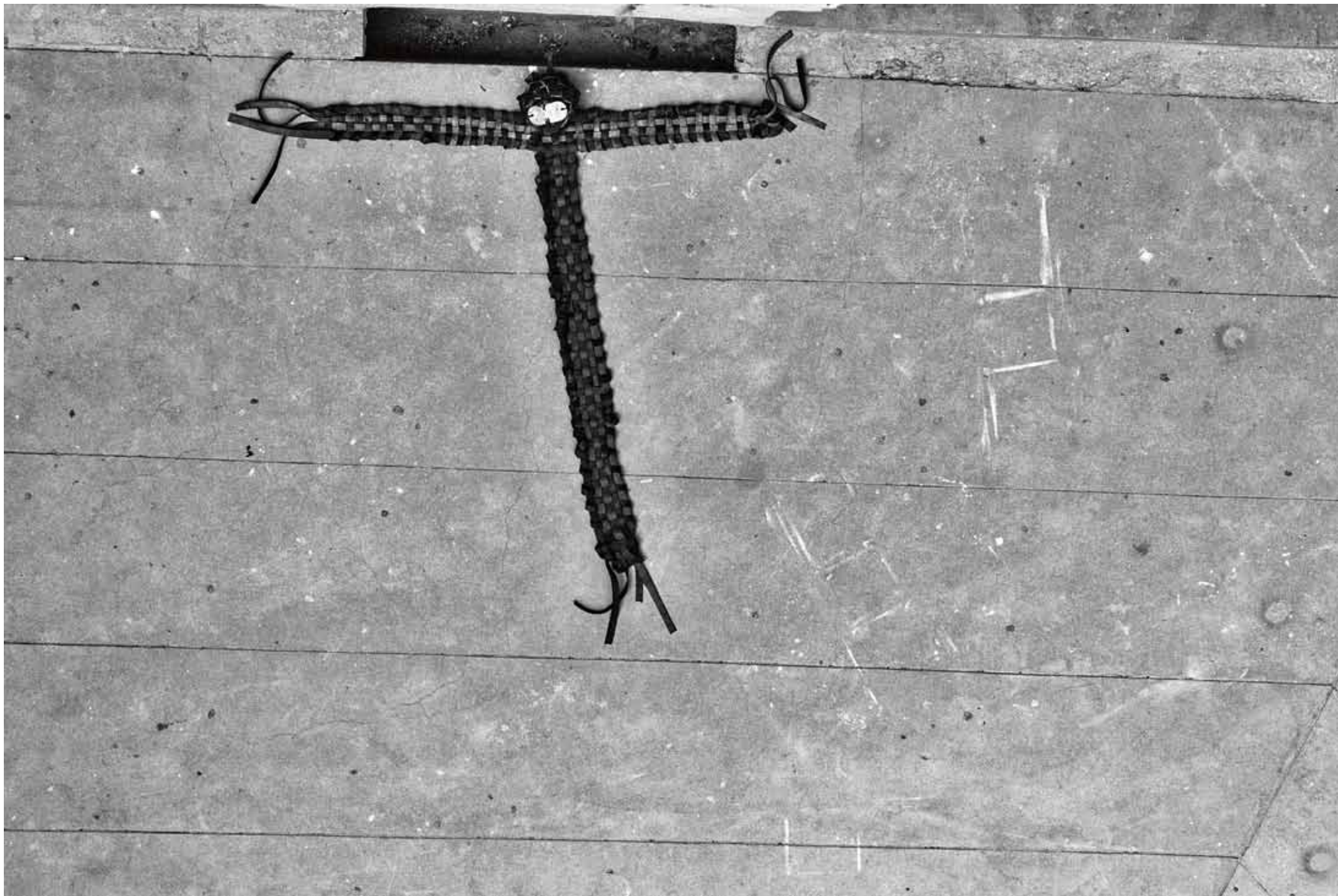
**Ajax Axe.** \*1985, USA



The God of Collapse I.  
Rubber tire strips, plastic bags,  
aluminium, mixed materials,  
100 x 100 X 15 cm















The Pyramide of Doom.  
Plastic bottles, cotton,  
fishing line,  
100 x 80 x 80 cm









**Hartmut Beier.** \*1967, Germany







Gardeni, Carrier.  
Oil on canvas, 30 x 23,5 cm

Gardeni, Katana.  
Oil on canvas, 30 x 23,5 cm

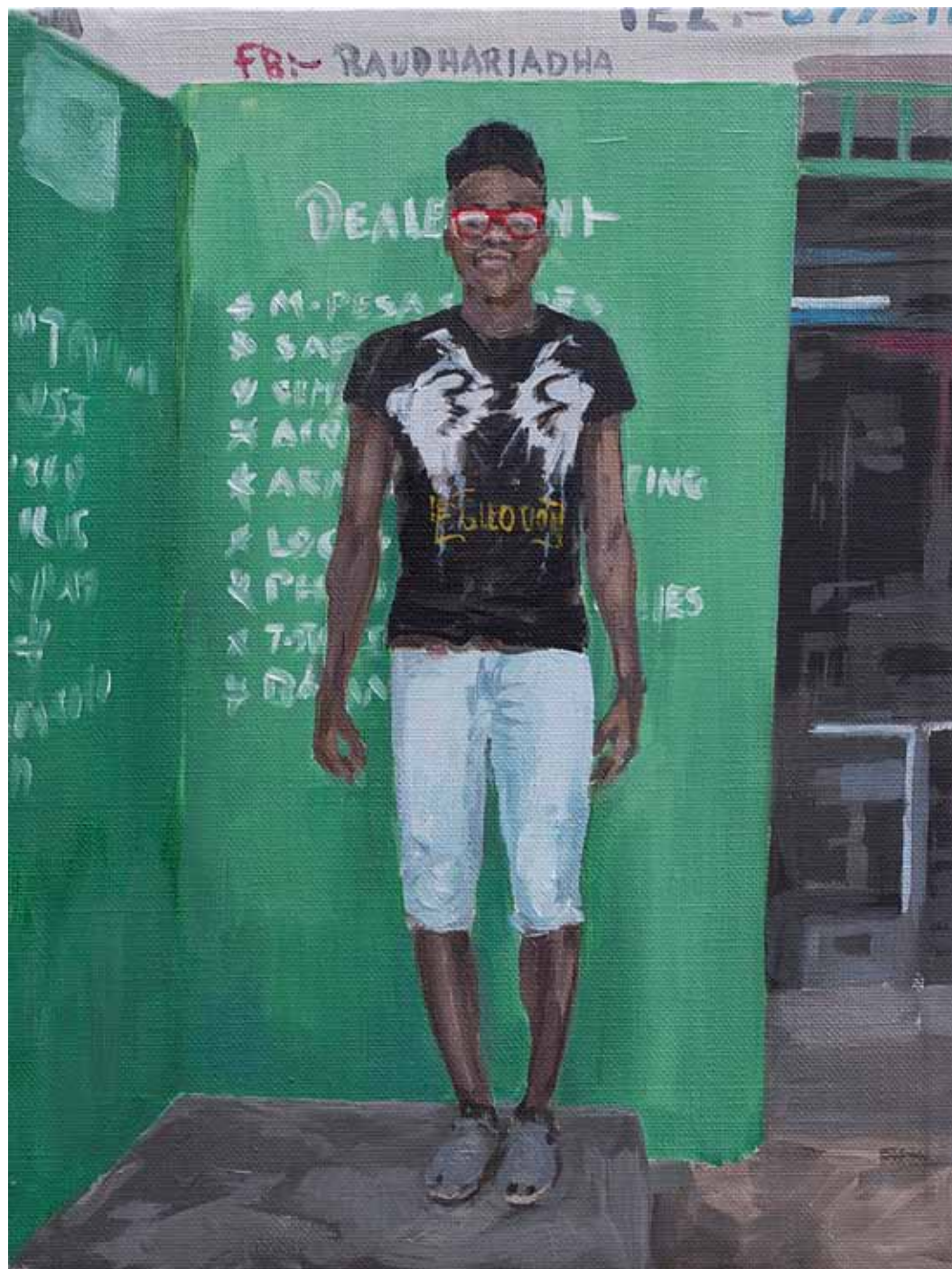




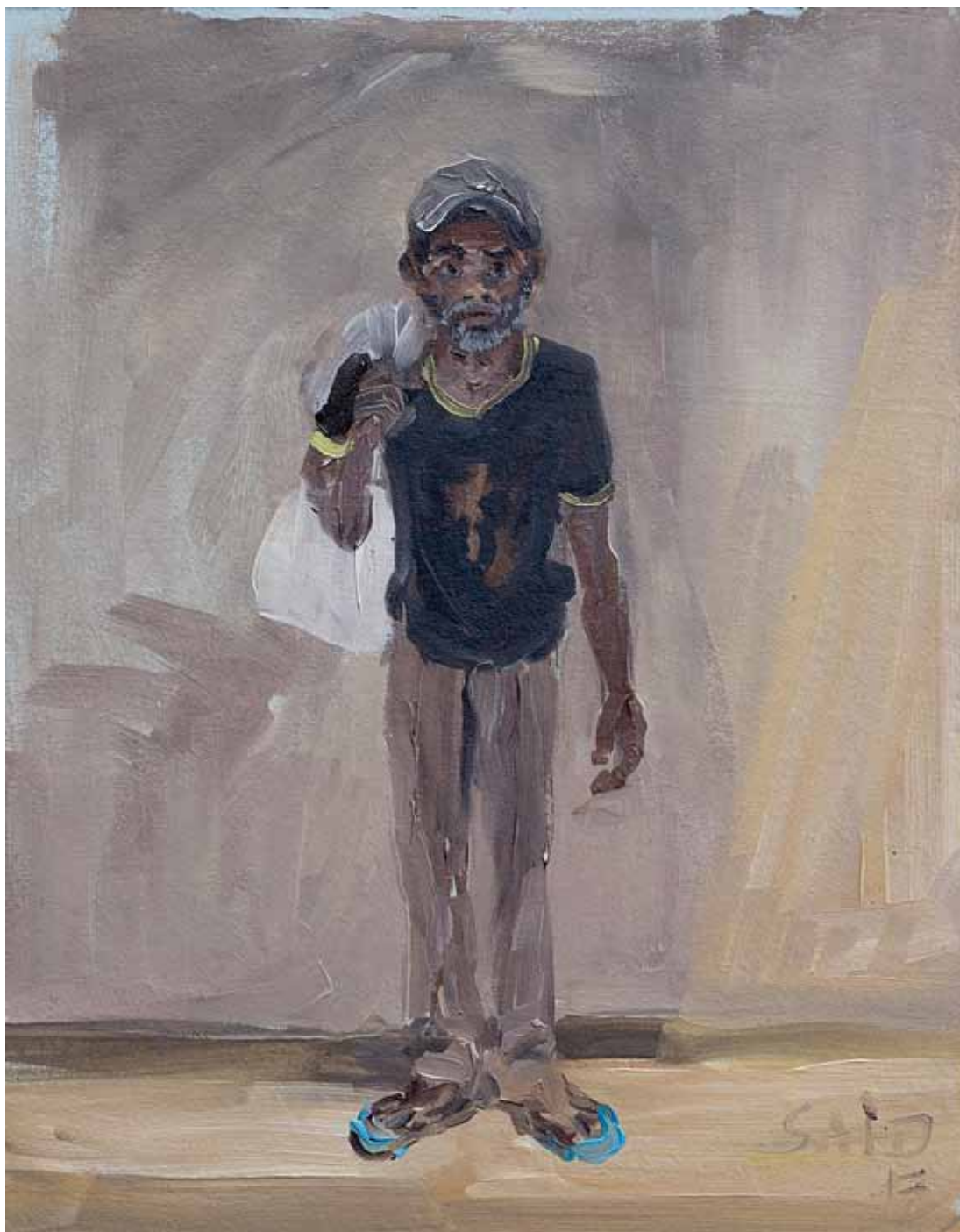


Lamu, Give Five.  
Oil on canvas, 30 x 23,5 cm

Gardeni, Safari.  
Oil on canvas, 30 x 23,5 cm





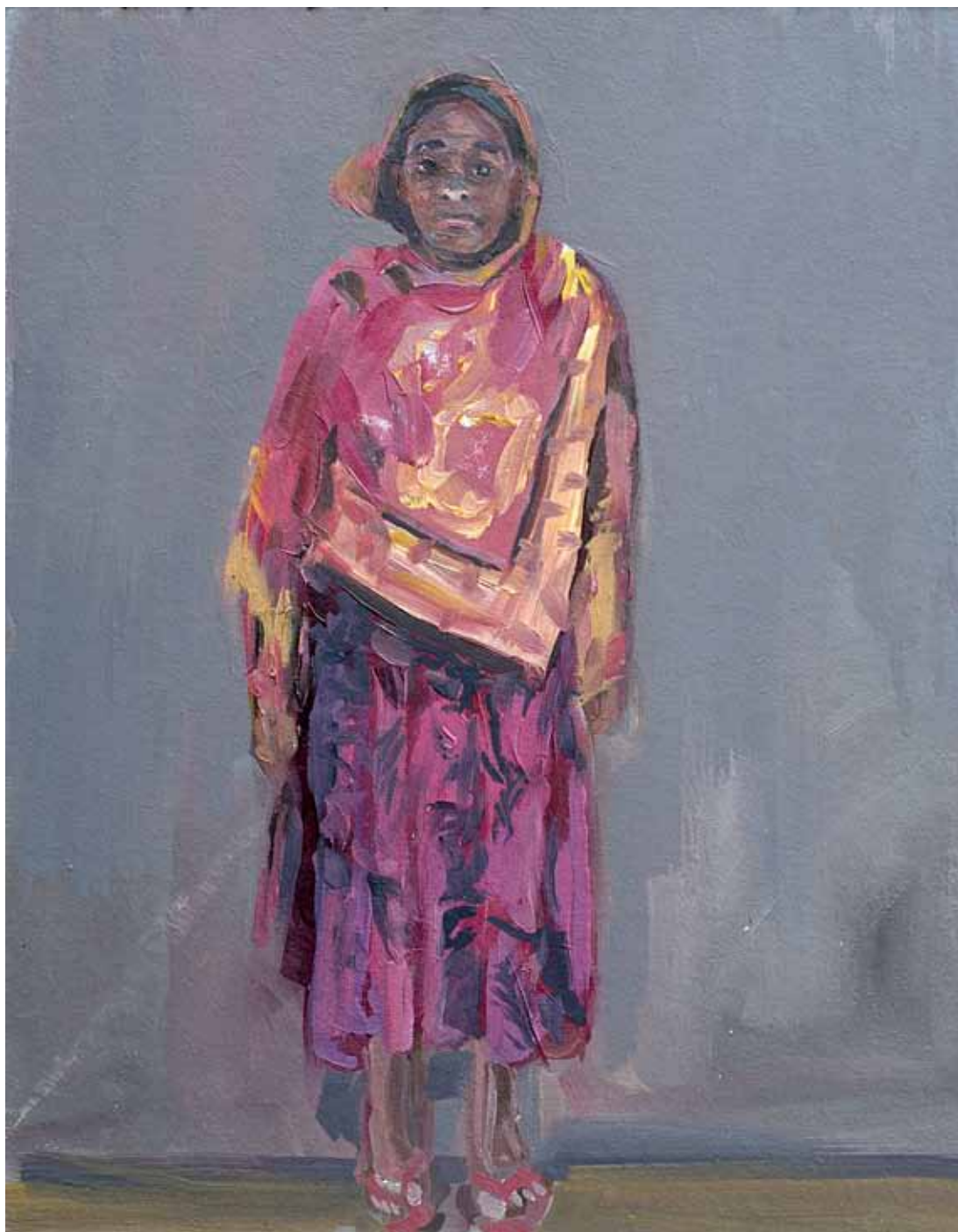


Gardeni, Said.  
Oil on canvas, 30 x 23,5 cm

Gardeni, Hamdan.  
Oil on canvas, 30 x 23,5 cm

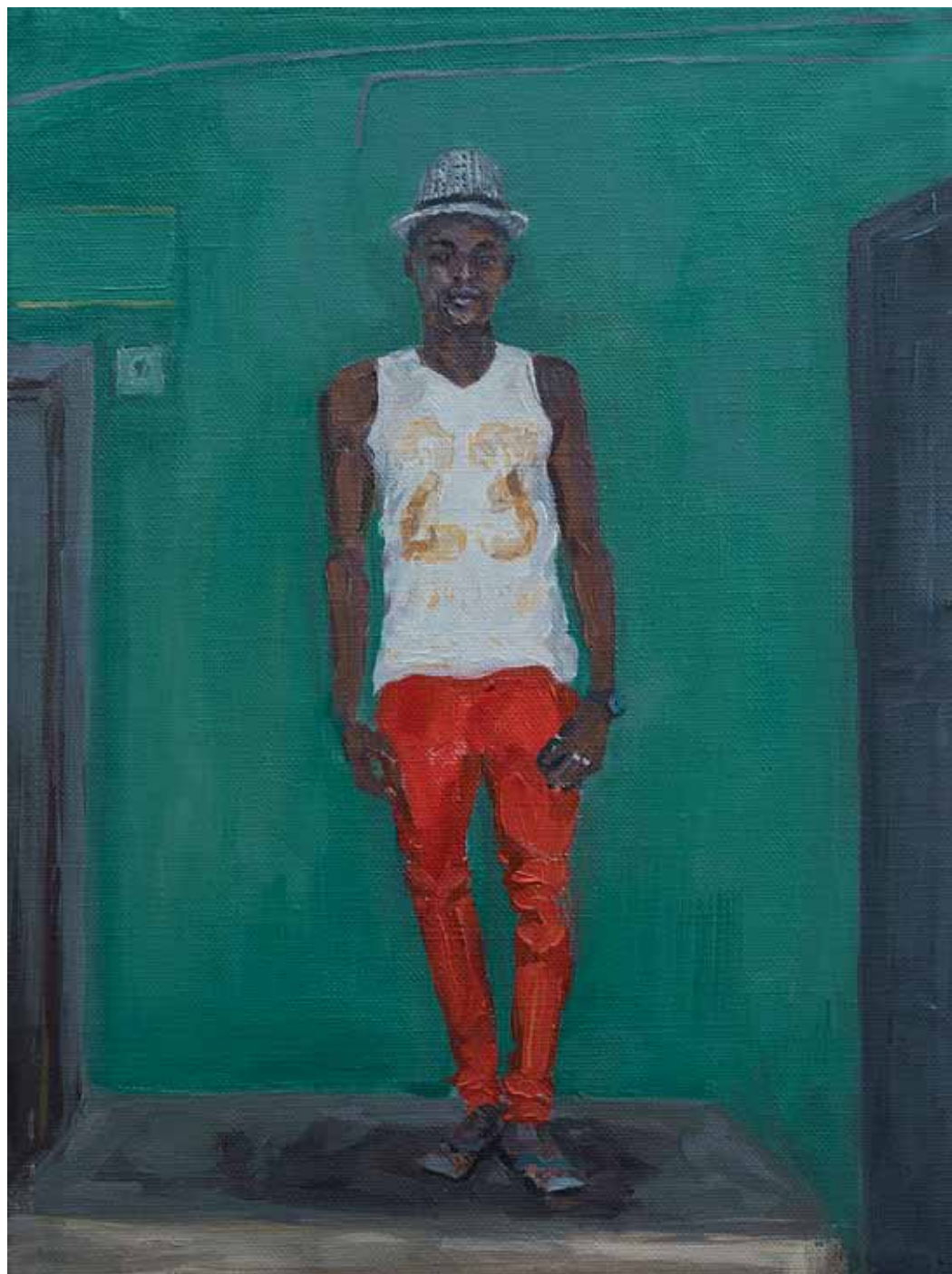






Gardeni, Grillshop Lady.  
Oil on canvas, 30 x 23,5 cm

Gardeni, 23.  
Oil on canvas, 30 x 23,5 cm







**Maina Boniface.** \*1987, Kenya







Rapping Crab. Ink on paper, 55 x 75 cm

Strain.  
Ink on paper, 60 x 42 cm







Ship and Canoe. Ink on paper, 55 x 75 cm



Lamu Land Transportation System. Ink on paper, 42 x 60 cm





**Natalia Dik.** \*1961, Russia







Elements of Africa I, II, III, IV, V. Oil on canvas, 90 x 100 cm / 90 x 40 cm





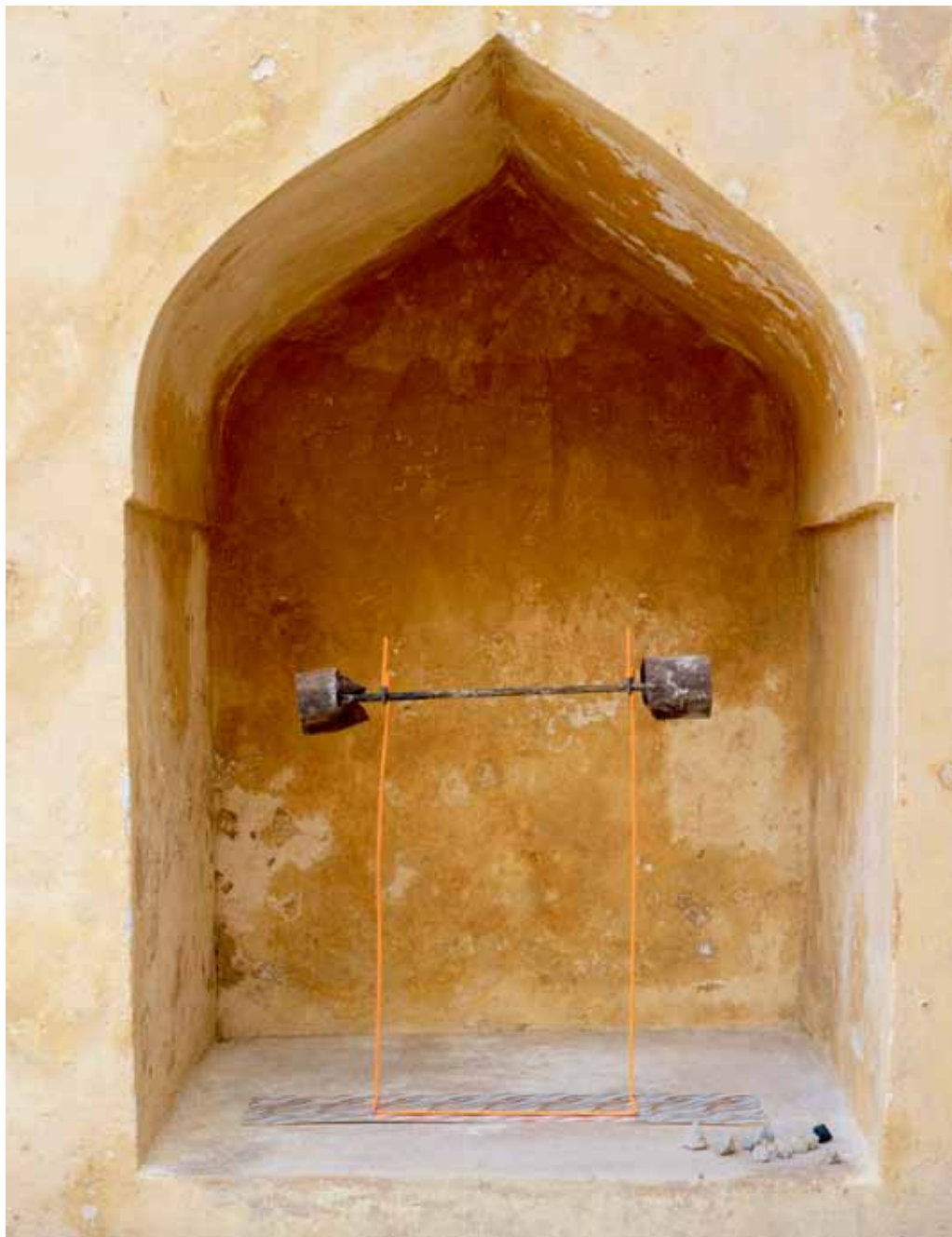


**Marc Einsiedel & Felix Jung. \*1983 & \*1985, Germany**



The Shela Whalebone Monument.





Local Dumb-bell.  
Steel, concrete, fluro, string, 110 x 100 x 25 cm



Head.  
Whalebone, steel, 210 x 70 cm



Bannner.  
Fabrics, 336 x 190 cm











Caleidoscop. Wood, brass, leather, mirror, lens, mixed media, 155 x 70 cm





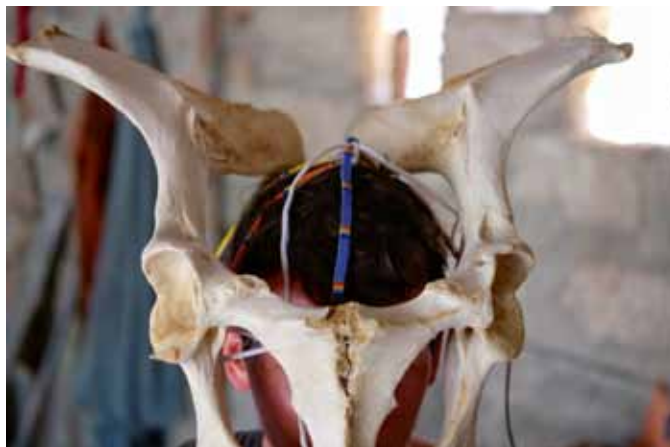
Knife. Wood, steel, glass, foam, 25,5 x 37,5 cm



Graffiti Dots. Wood, plywood, paint, glass, 26 x 46,5 cm



Flip Flop. Wood, flip flop stripes, 50 x 20 cm



Mask.  
Whalebone, bracelet,  
38 x 38 x 25 cm







**Waweru Gichui.** \*1989, Kenya

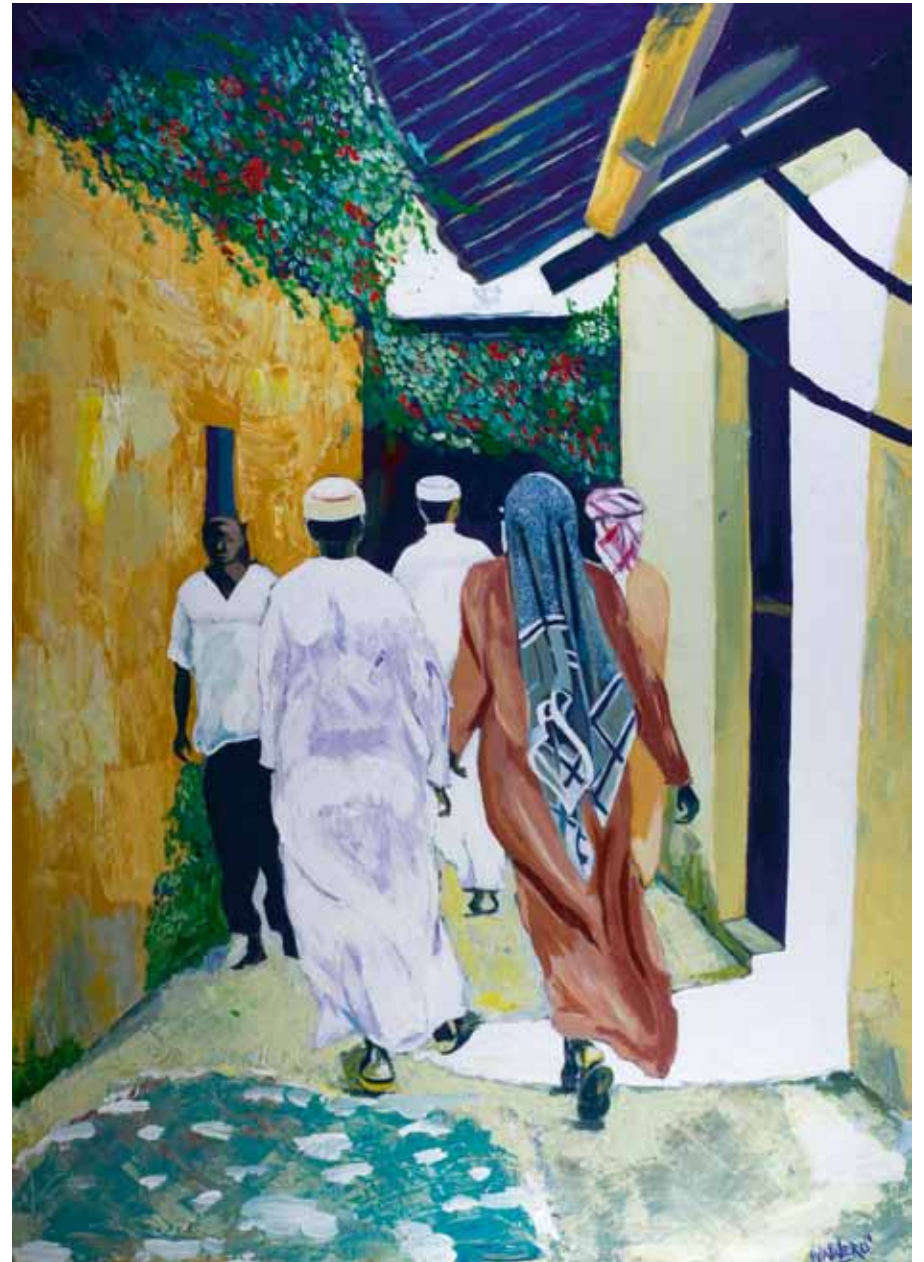






Shela Rooftop. Acrylic on card, 55 x 75 cm

Towards Friday Mosque.  
Acrylic on card, 80 x 50 cm







Aisha.  
Acrylic on canvas,  
100 x 100 cm

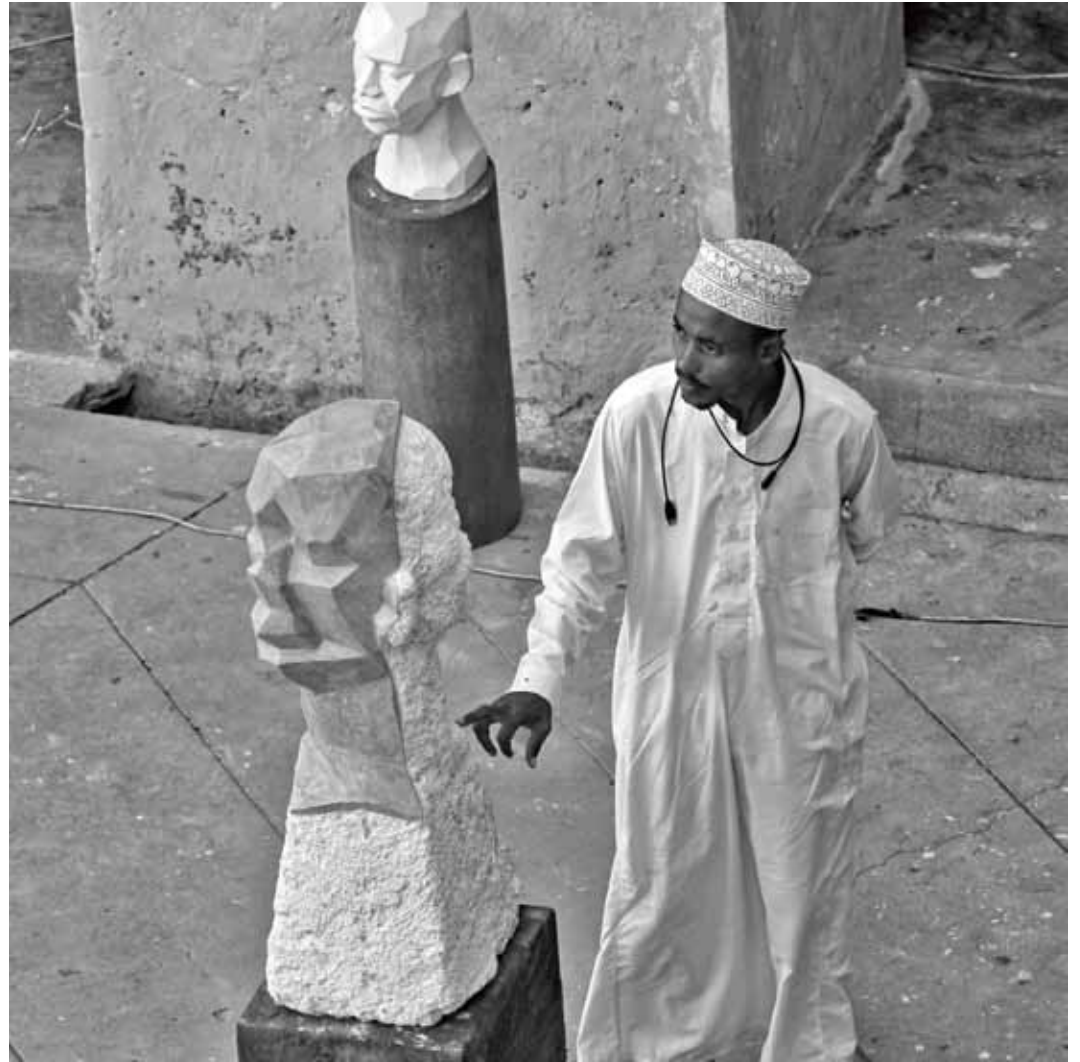


Donkey with  
Green Sky.  
Acrylic on canvas,  
55 x 75 cm





**Eveline van de Griend.** \*1976, Netherlands











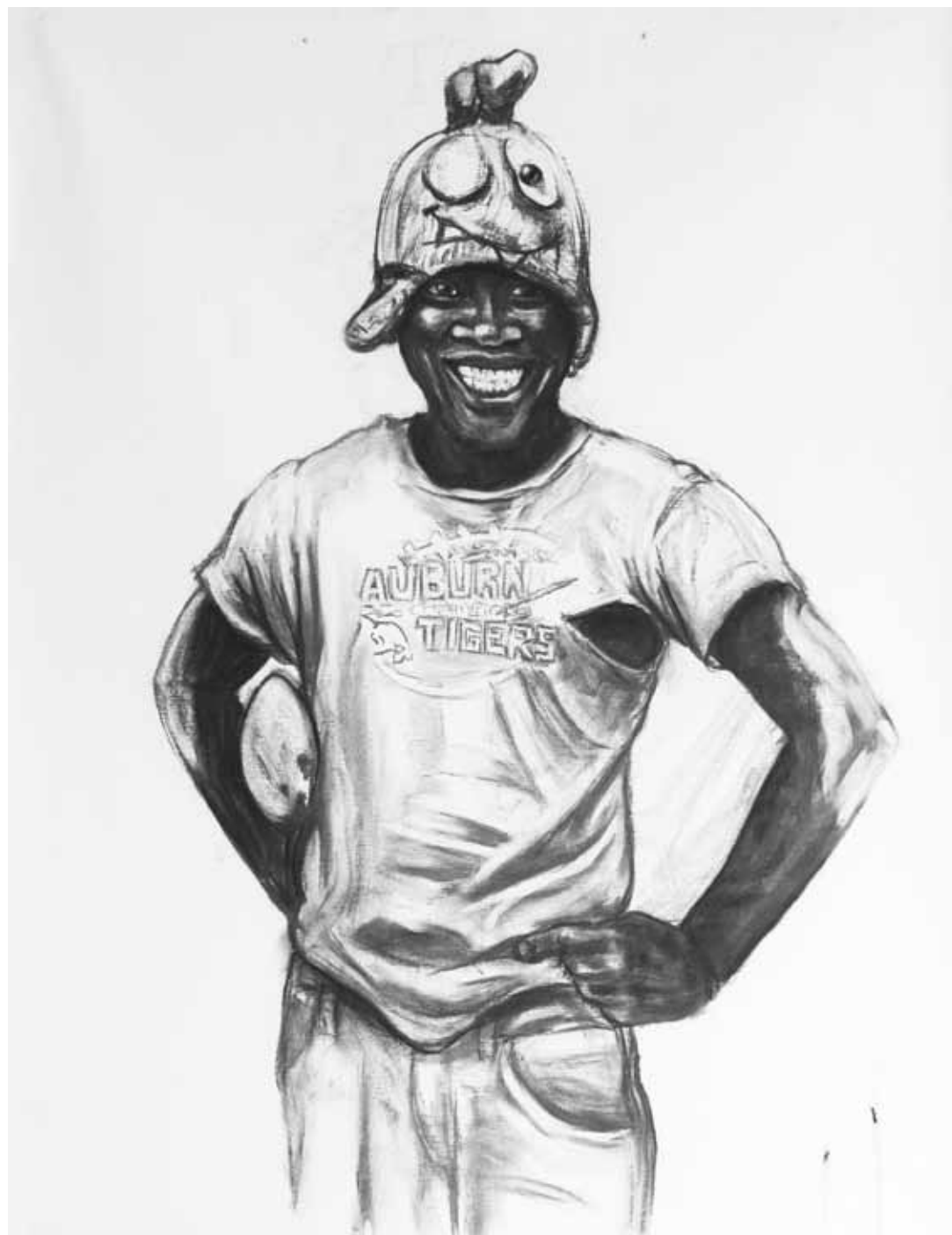
Under Blue Skies. Coral stone, nero lime plaster, pigment. 90 x 27 x 27 cm





Grace.  
Charcoal on paper,  
60 x 42 cm

Kazungo's Smile.  
Charcoal on paper,  
60 x 42 cm







Coconut Lady.  
Charcoal on paper,  
60 x 42 cm

Together as one.  
Charcoal on paper,  
60 x 42 cm







A Whalebone Monument.  
Charcoal on paper,  
60 x 42 cm

Giving Hope a Hand.  
Charcoal on paper,  
60 x 42 cm







Recapturing Blue.  
Ancient lime stucco, pigment on concrete,  
24 x 18 cm

Sunny Side Up.  
Oil on canvas,  
105 x 68 cm







Kasbah.  
Coral stone, nero lime plaster,  
40 x 20 x 20 cm

Bahja.  
Oil on canvas,  
67,5 x 53,5 cm







**Rob Jacobs.** \*1960, Netherlands







Shela Lamu.  
Oil on canvas,  
80 x 140 cm  
66





Kijani Gardens.  
Oil on canvas,  
120 x 120 cm





The One with More Boats. Oil on canvas, 80 x 100 cm



Kijani Beach. Oil on canvas, 100 x 120 cm





**Nduta Kariuki.** \*1987, Kenya

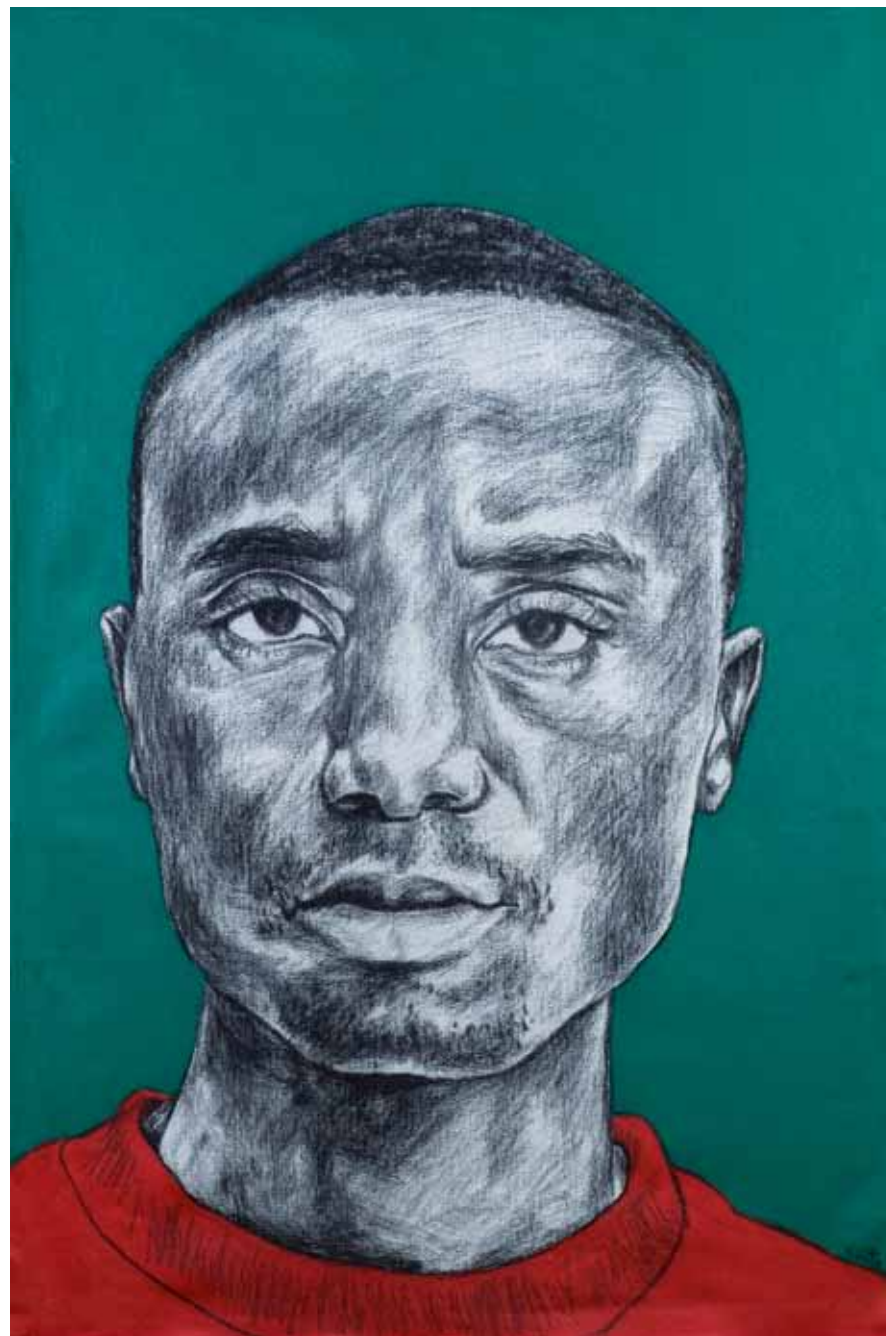


Omar I. Acrylic on paper, 50 x 70 cm





Omar II. Acrylic on paper, 70 x 50 cm



Baraka I. Acrylic on paper, 90 x 60 cm



Baraka II. Acrylic on paper, 50 x 50 cm





**Zihan Kassam.** \*1980, Kenya







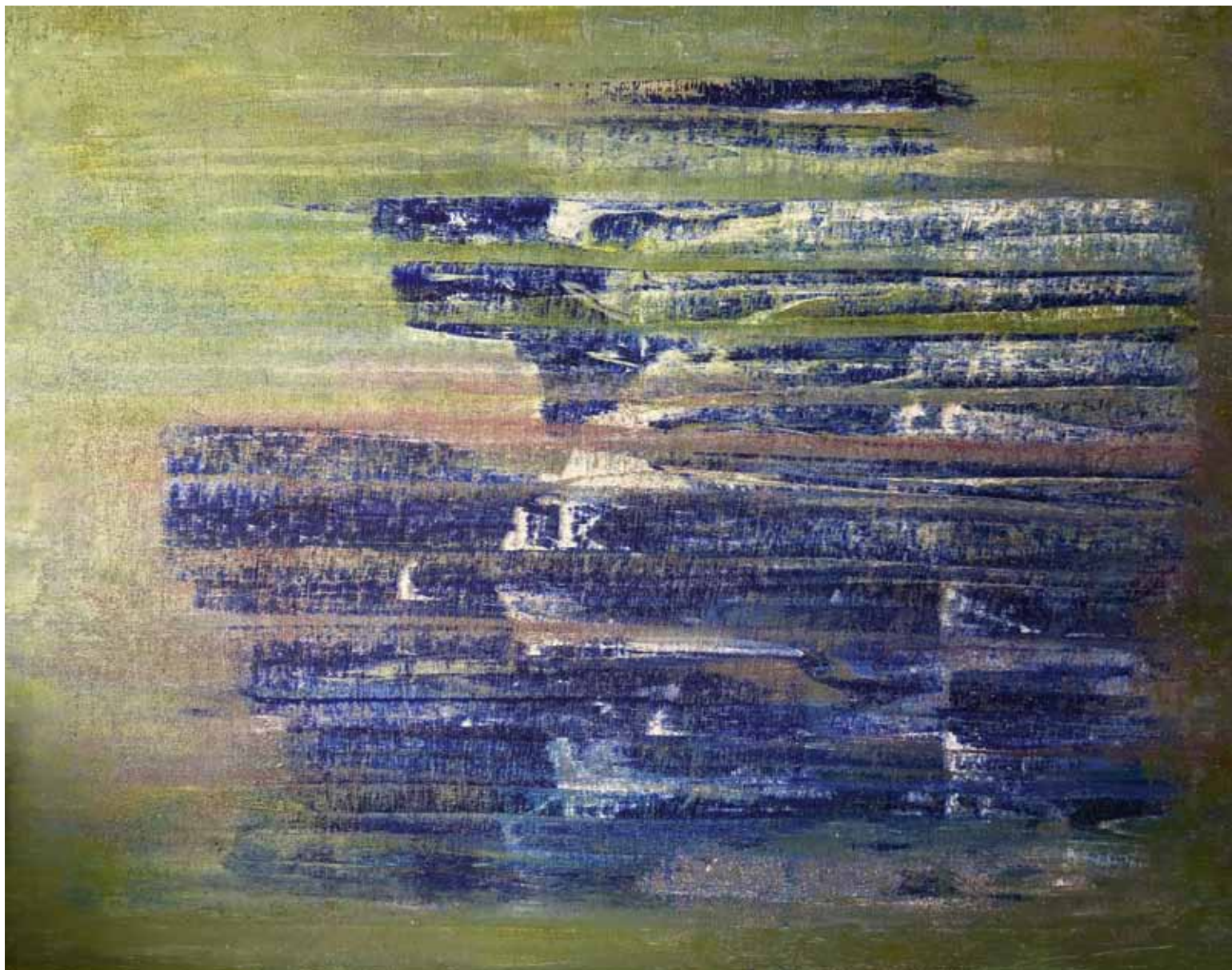
Manda by Night. Acrylic & sand on canvas, 92 x 120 cm





White Sea. Acrylic & sand on canvas, 92 x 120 cm





The Mangroves. Acrylic & sand on canvas, 92 x 120 cm





Soug Seagreen. Acrylic & sand on canvas, 92 x 120 cm





Channel Crossing. Acrylic & sand on canvas, 92 x 120 cm





Night Hour. Acrylic & sand on canvas, 92 x 120 cm



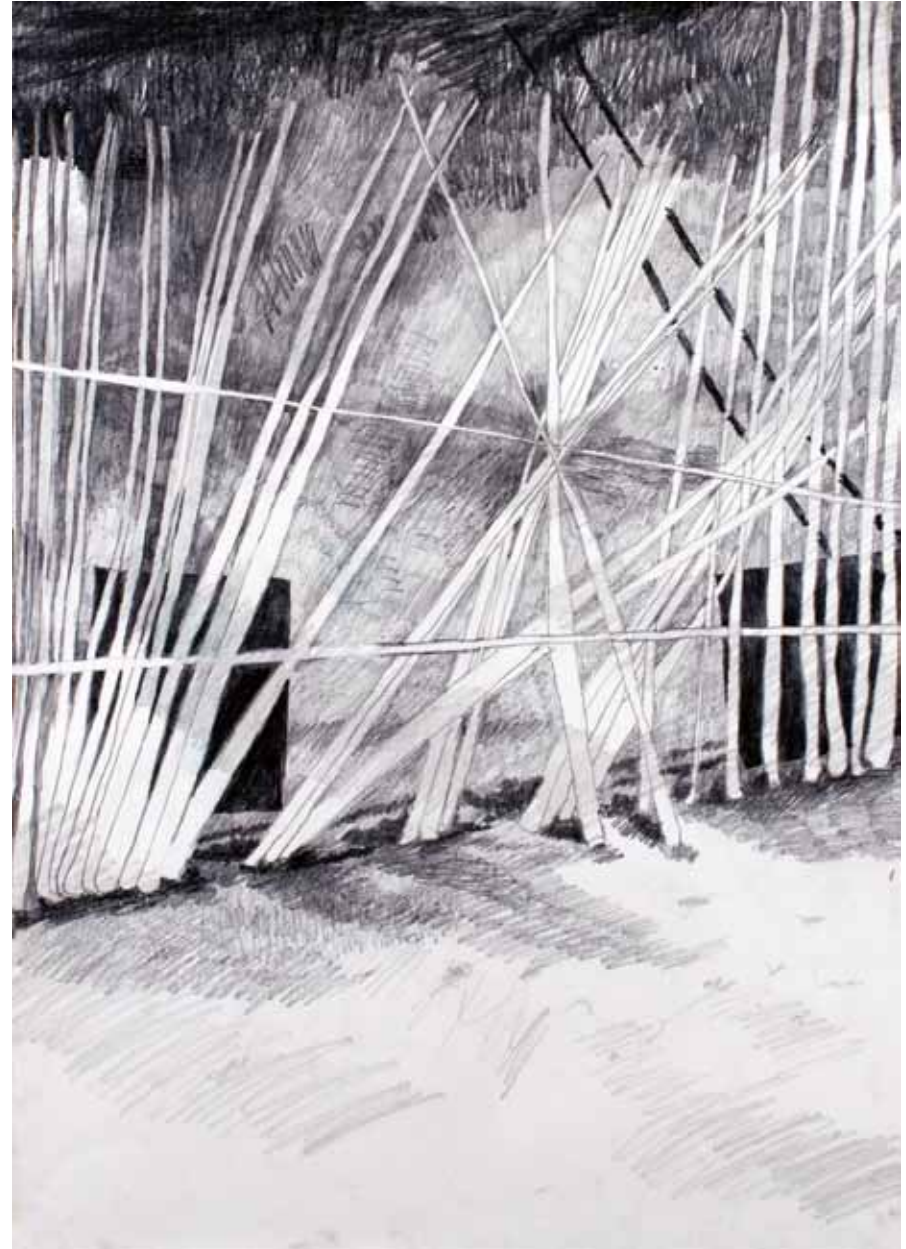


**Ekaterina Mitichkina.** \*1980, Belarus

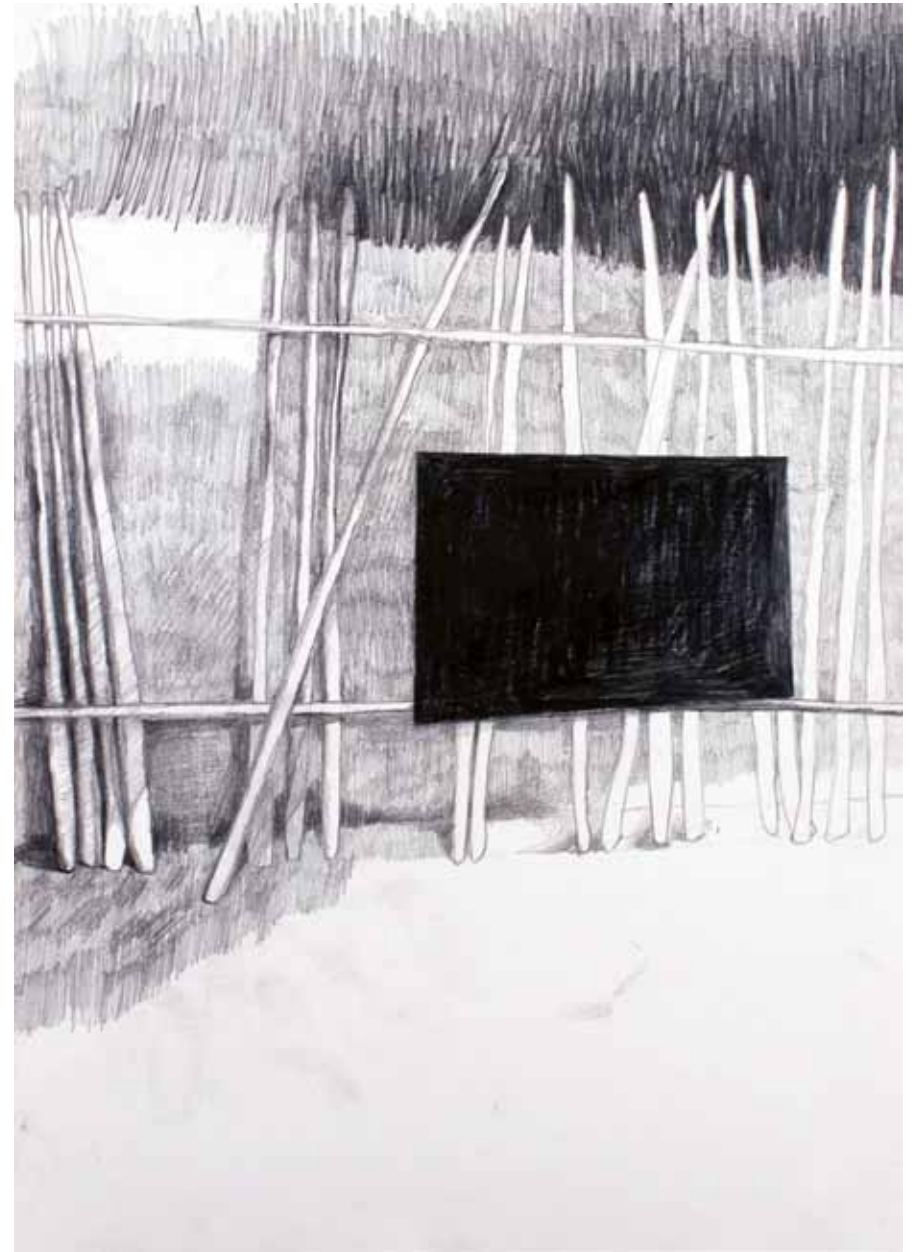
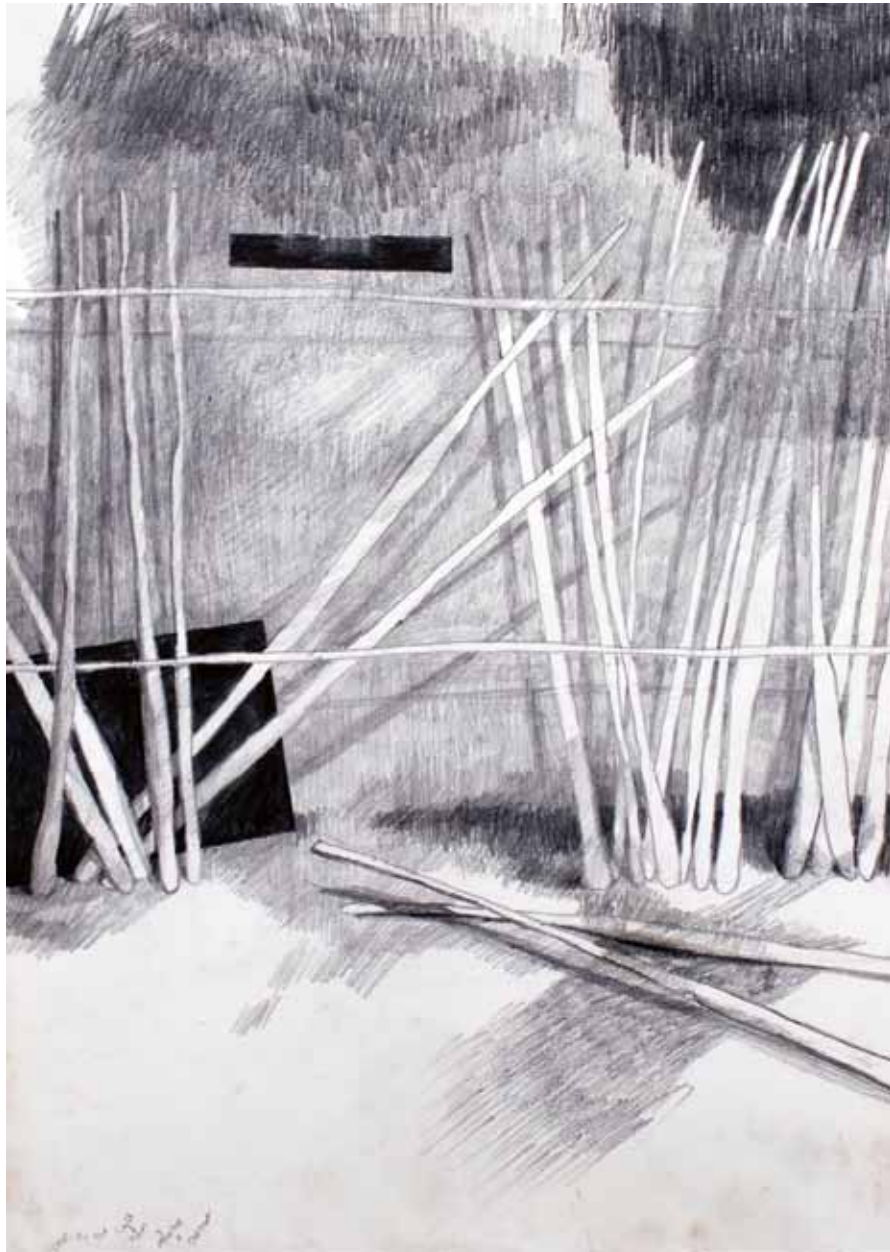
Lamu Beach.  
Graphite, pastel, crayon on paper,  
59 x 42 cm







There is no Light without Shadow I, II, III.  
Graphite on paper, 42 x 29,7 cm







Together as One.  
Kenyan cotton and German cotton,  
40 x 65 cm





The Backyard is not Important.  
Charcoal, graphite, chalk, white paint on paper,  
144 x 220 cm



I See the Sea.  
Graphite, pastel, crayon on paper,  
59 x 124 cm





Some Dreams Never Die.  
Graphite, pastel, crayon on paper,  
59 x 124 cm



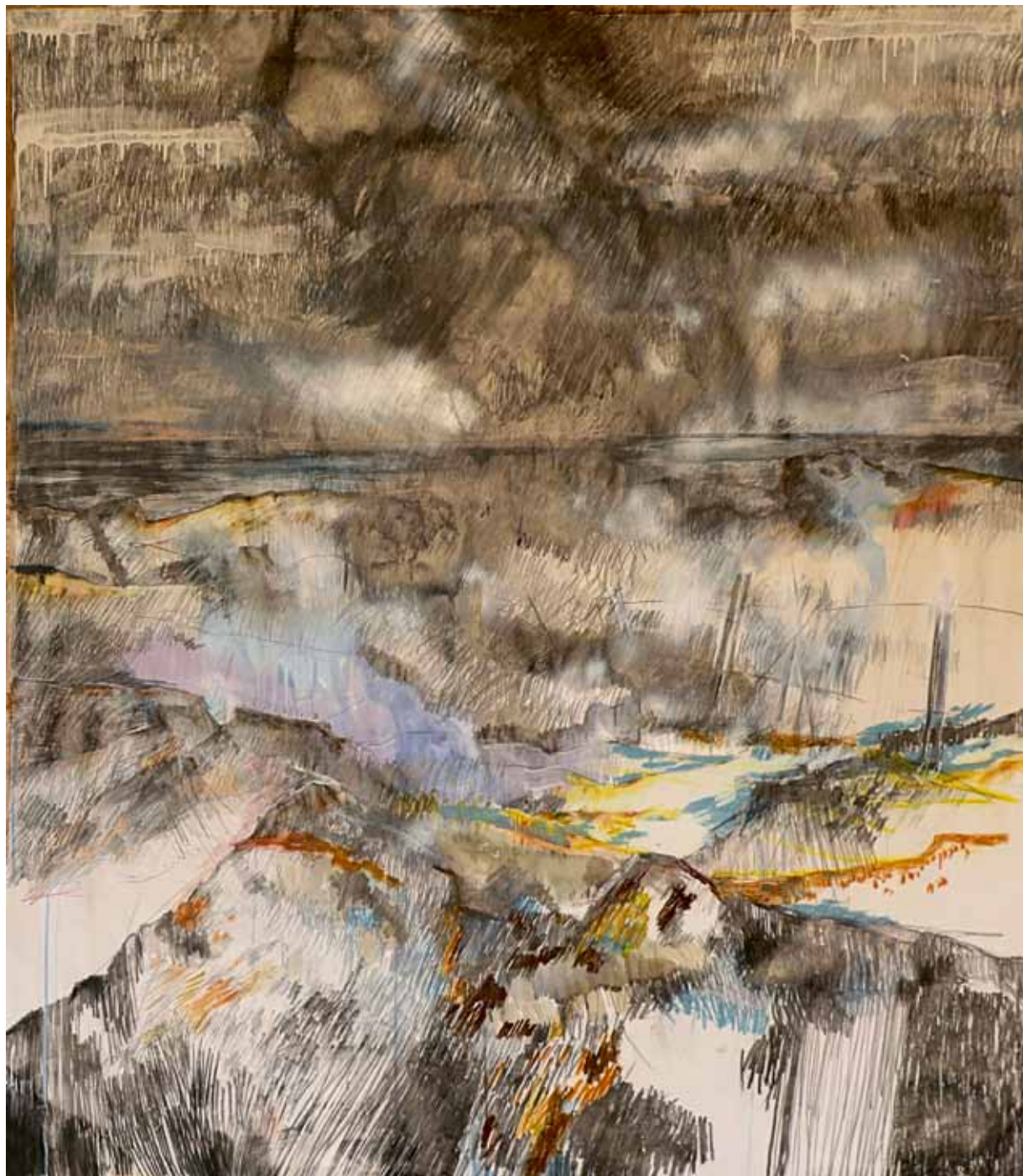




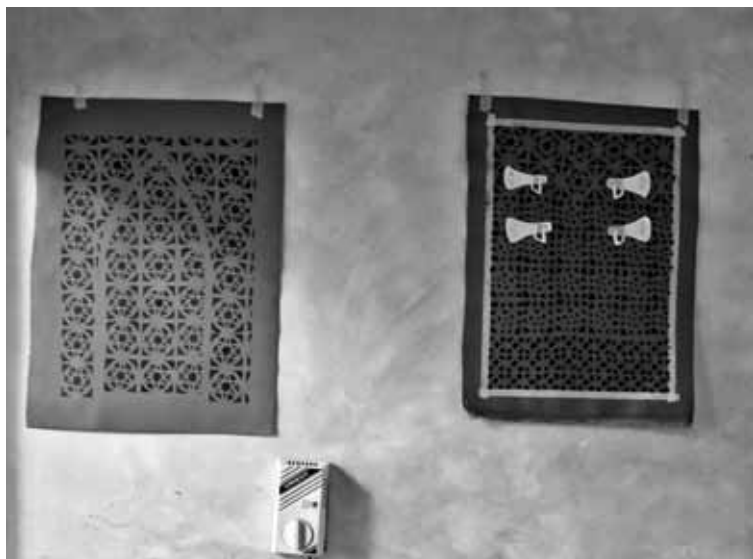
What is Allowed is Forbidden.

Plastic bottle, mango, cane sugar, latex gloves, cloth,  
50 x 25 cm

Dark Clouds are Coming.  
Pastell, graphite, crayon,  
white paint on paper, 190 x 150 cm







**Peter Ngugi.** \*1978, Kenya

Walls Have Ears I.  
Oil on canvas, 42 x 30 cm







Walls Have Ears II.  
Oil on canvas, 42 x 30 cm

Walls Have Ears III.  
Oil on canvas, 42 x 30 cm





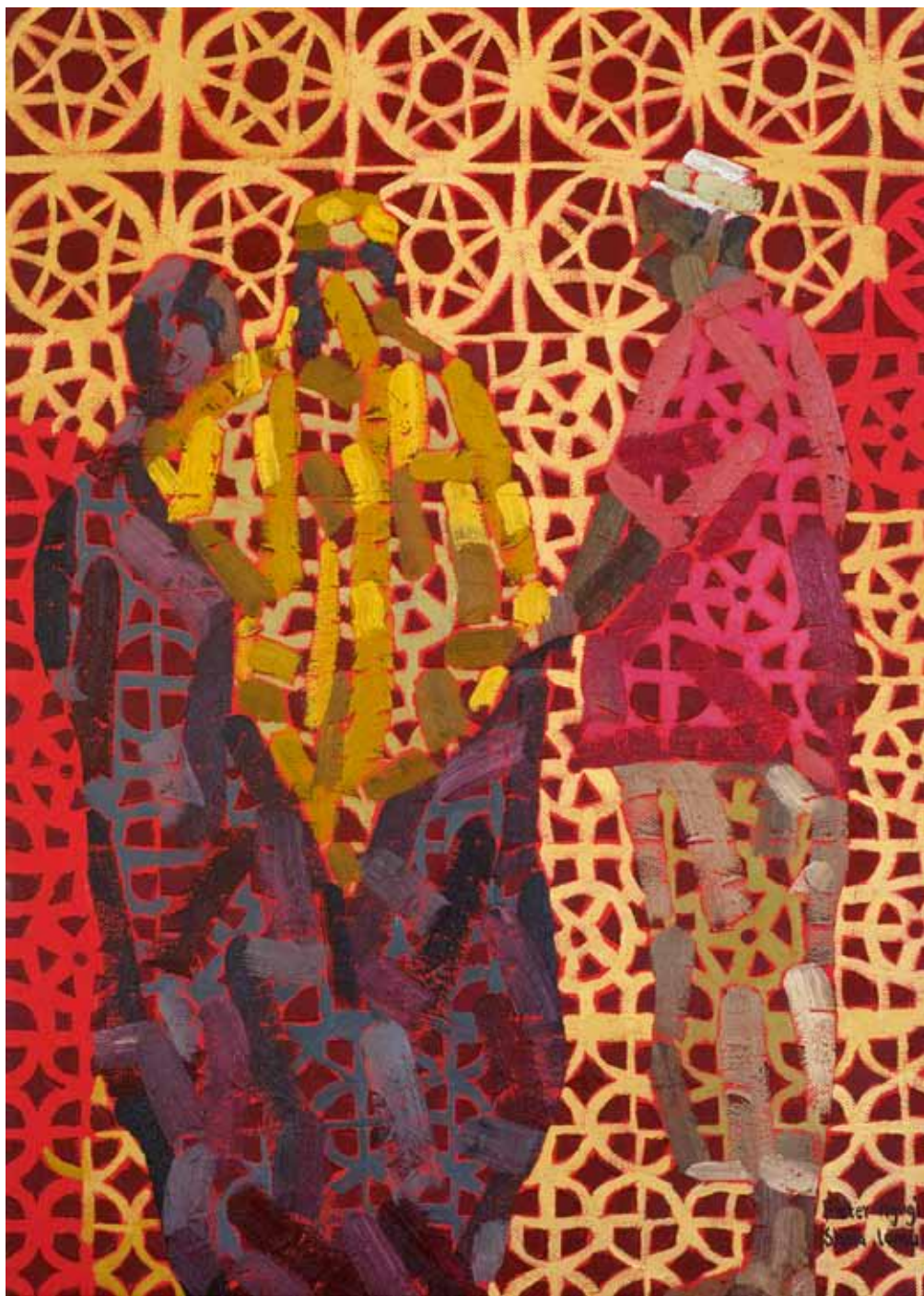


Walls Have Ears IV.  
Oil on canvas, 42 x 30 cm

Walls Have Ears V.  
Oil on canvas, 42 x 30 cm

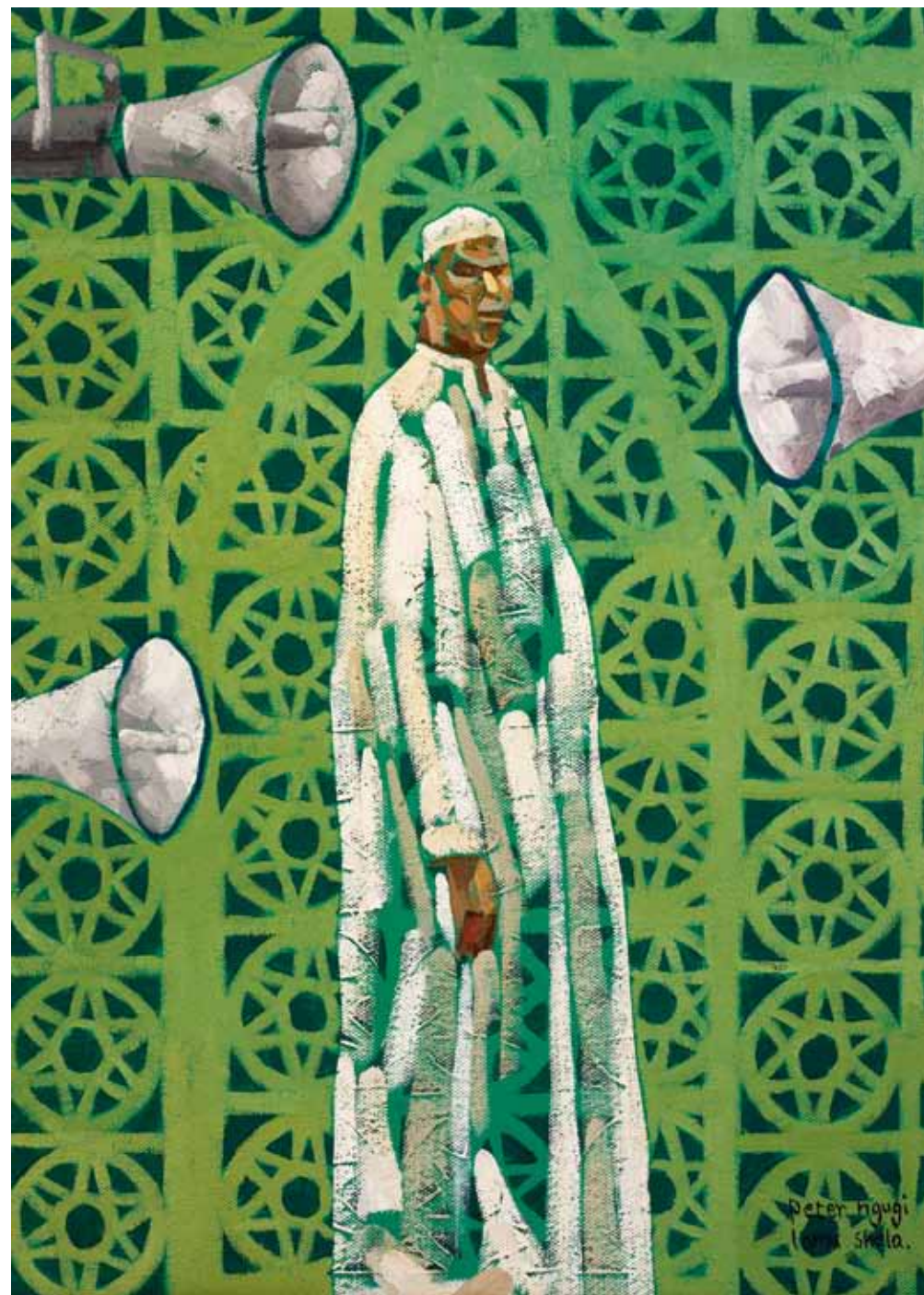






Walls Have Ears VI.  
Oil on canvas, 42 x 30 cm

Walls Have Ears VII.  
Oil on canvas, 42 x 30 cm

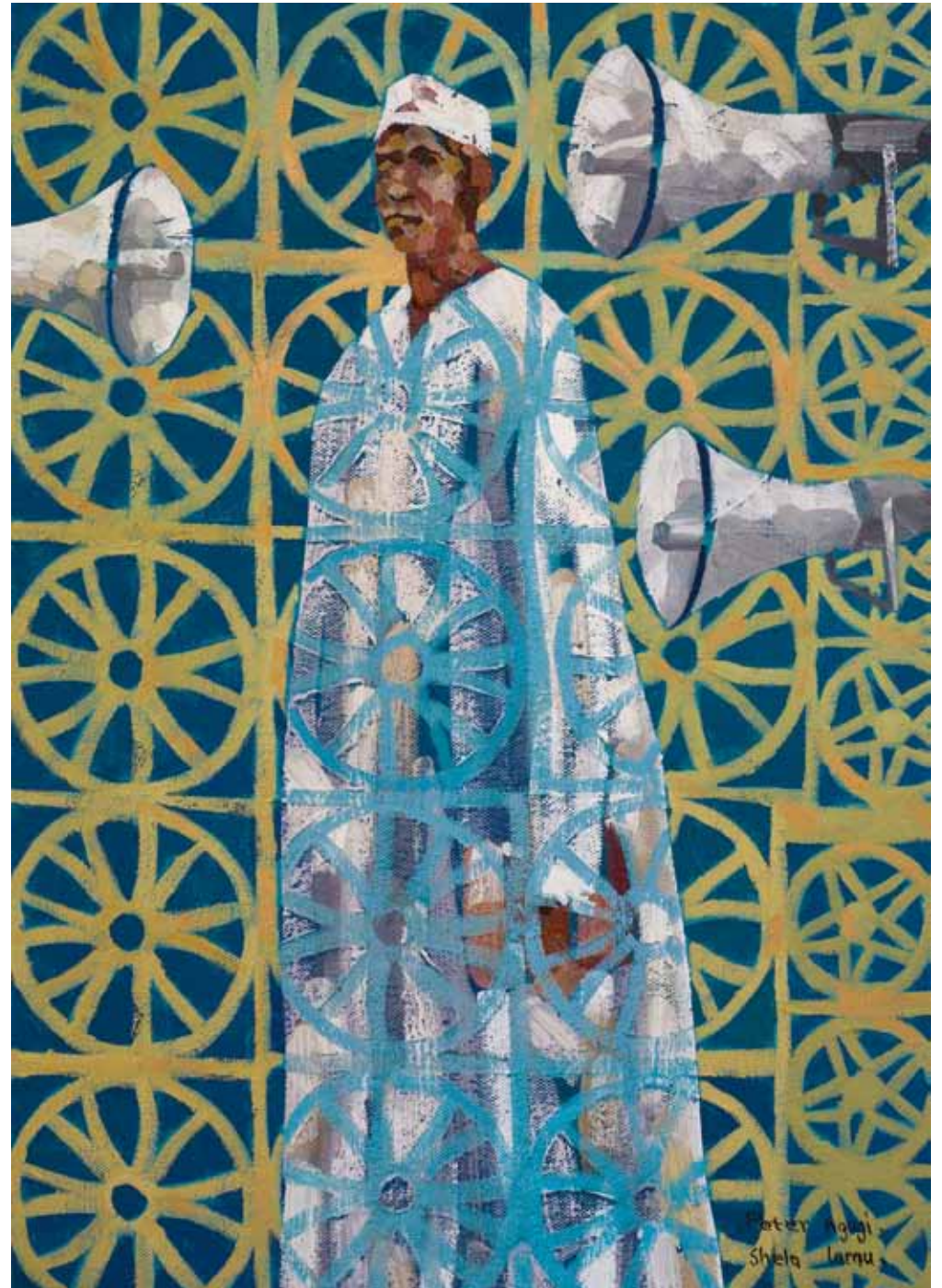






Walls Have Ears VIII.  
Oil on canvas, 42 x 30 cm

Walls Have Ears IX.  
Oil on canvas, 42 x 30 cm







**James Njoroge.** \*1988, Kenya







Loading Bay. Collage, 60 x 100 cm





Donkeys on the Beach. Collage, 70 x 95 cm





Everyone Deserves to be Pampered. Collage, 42 x 59 cm



Skinny Street.  
Collage,  
72 x 56 cm



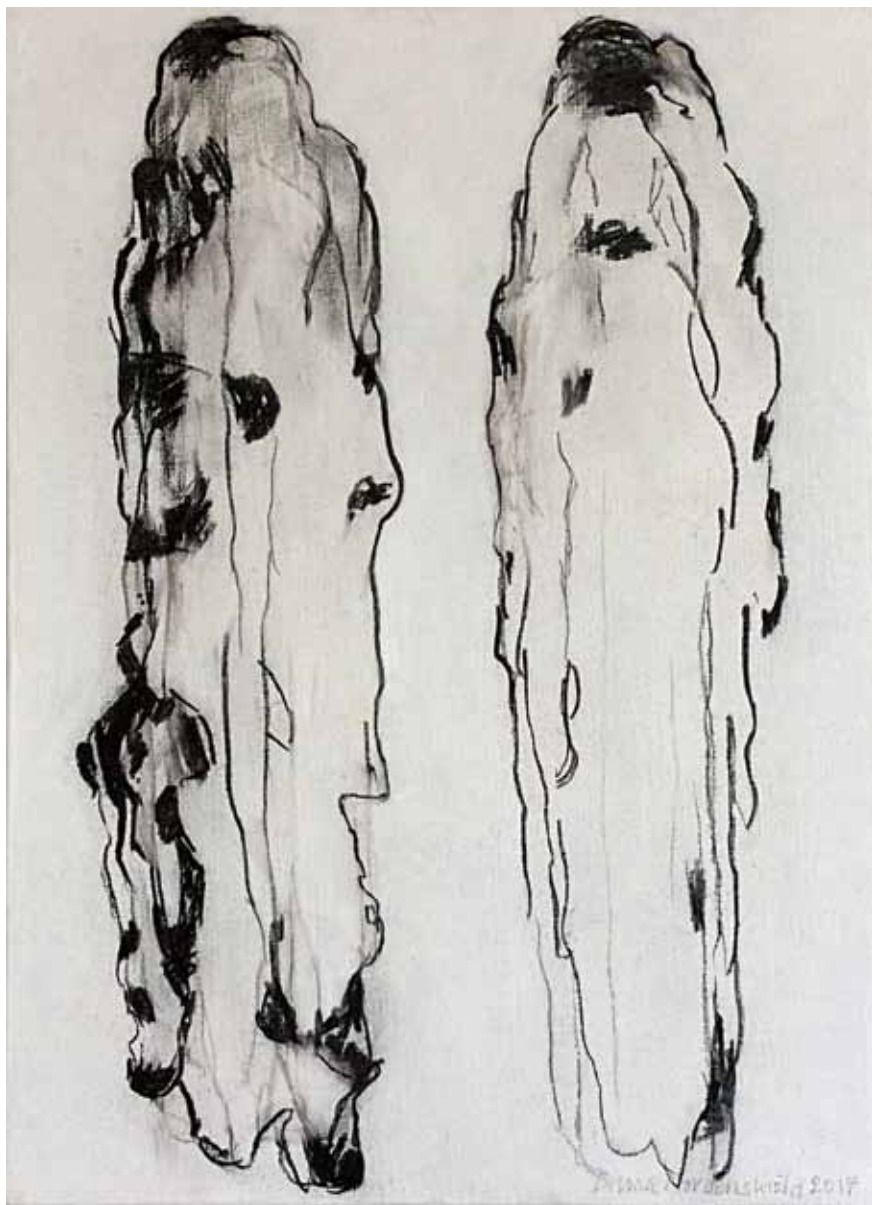




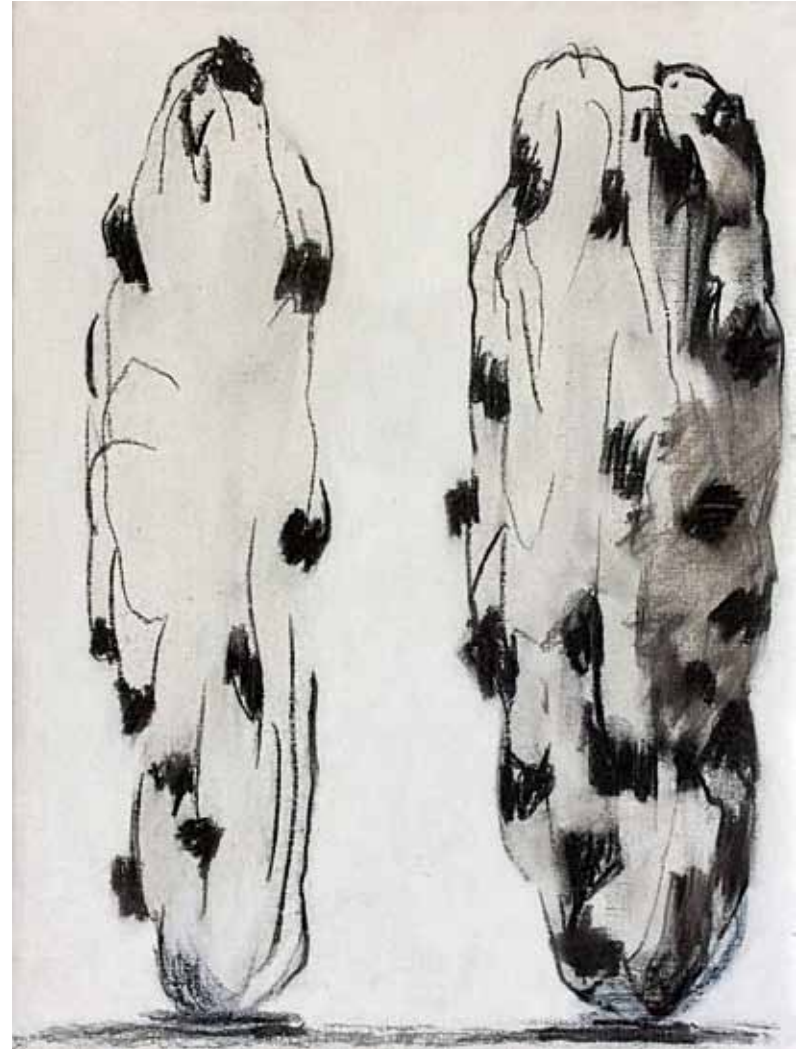
**Anna Nordenskiöld.** \*1950, Sweden





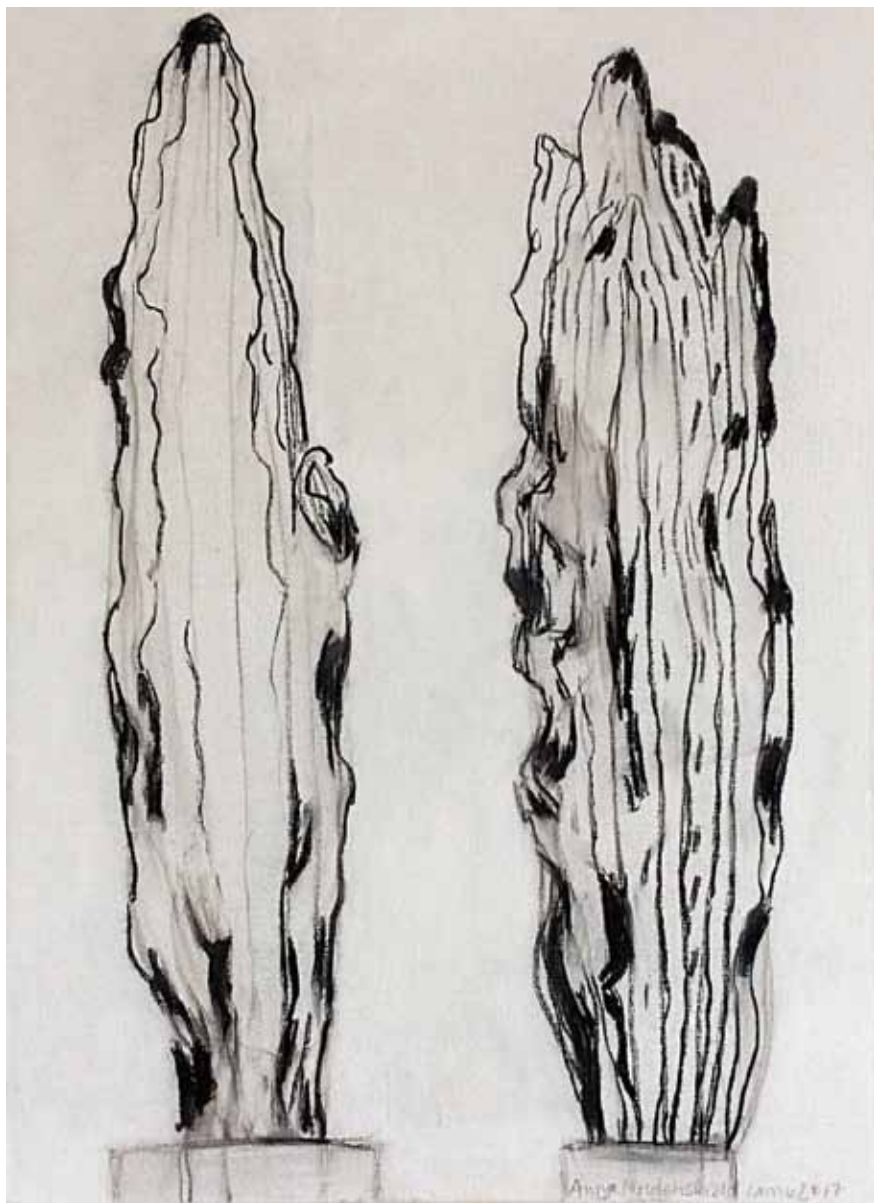


Reflexion I. Charcoal on canvas, 55 x 40 cm

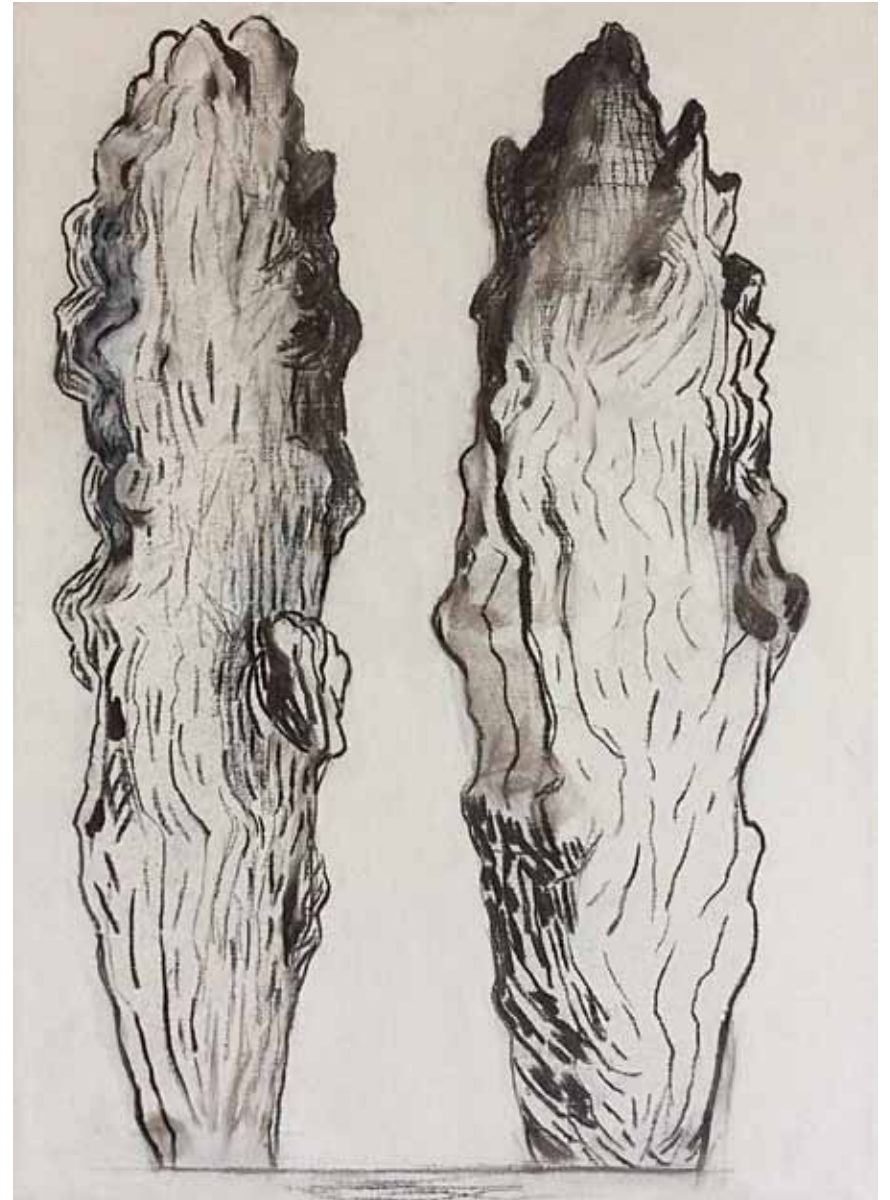


Reflexion II. Charcoal on canvas, 40 x 30 cm





Reflexion III. Charcoal on canvas, 55 x 40 cm



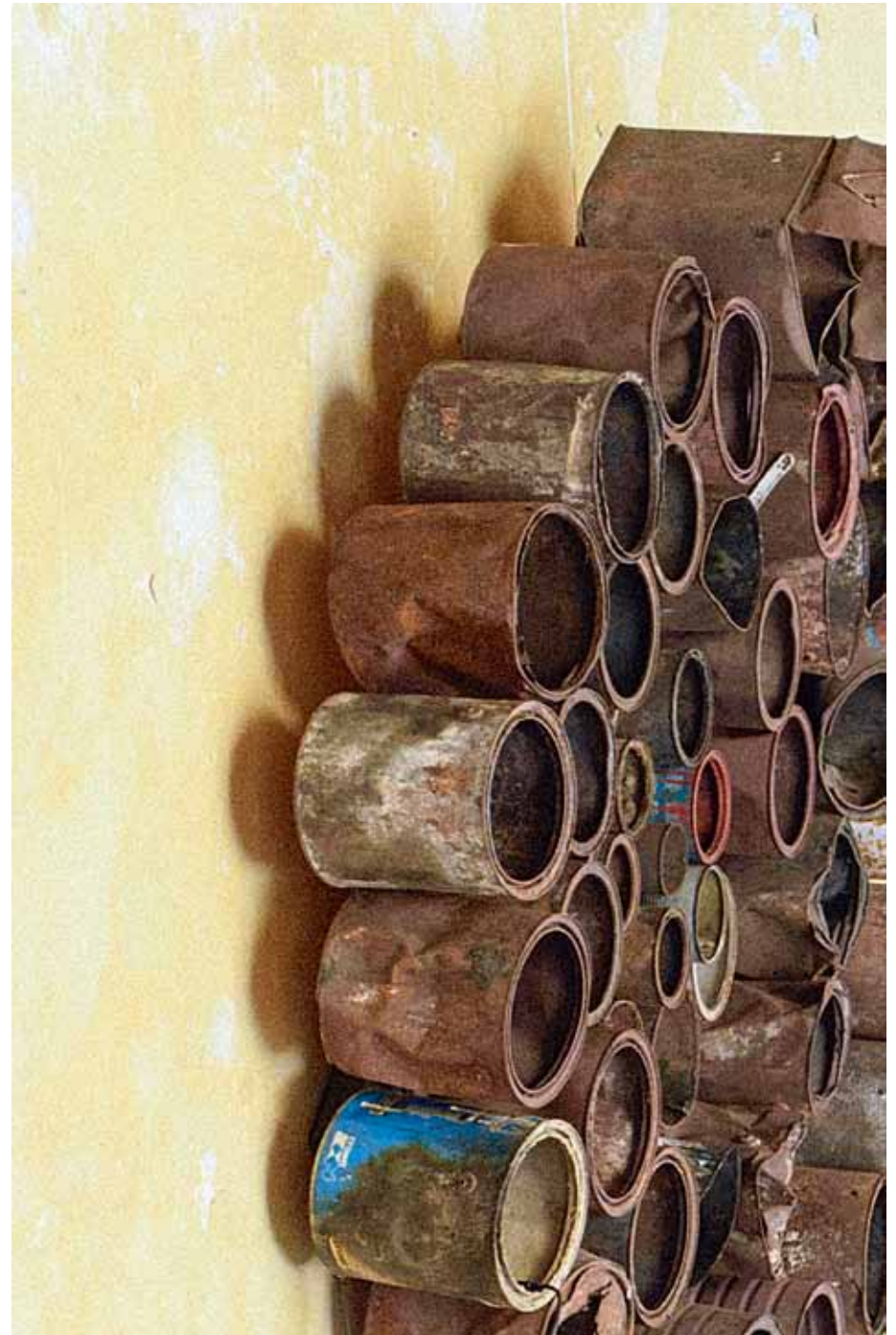
Reflexion IV. Charcoal on canvas, 55 x 40 cm



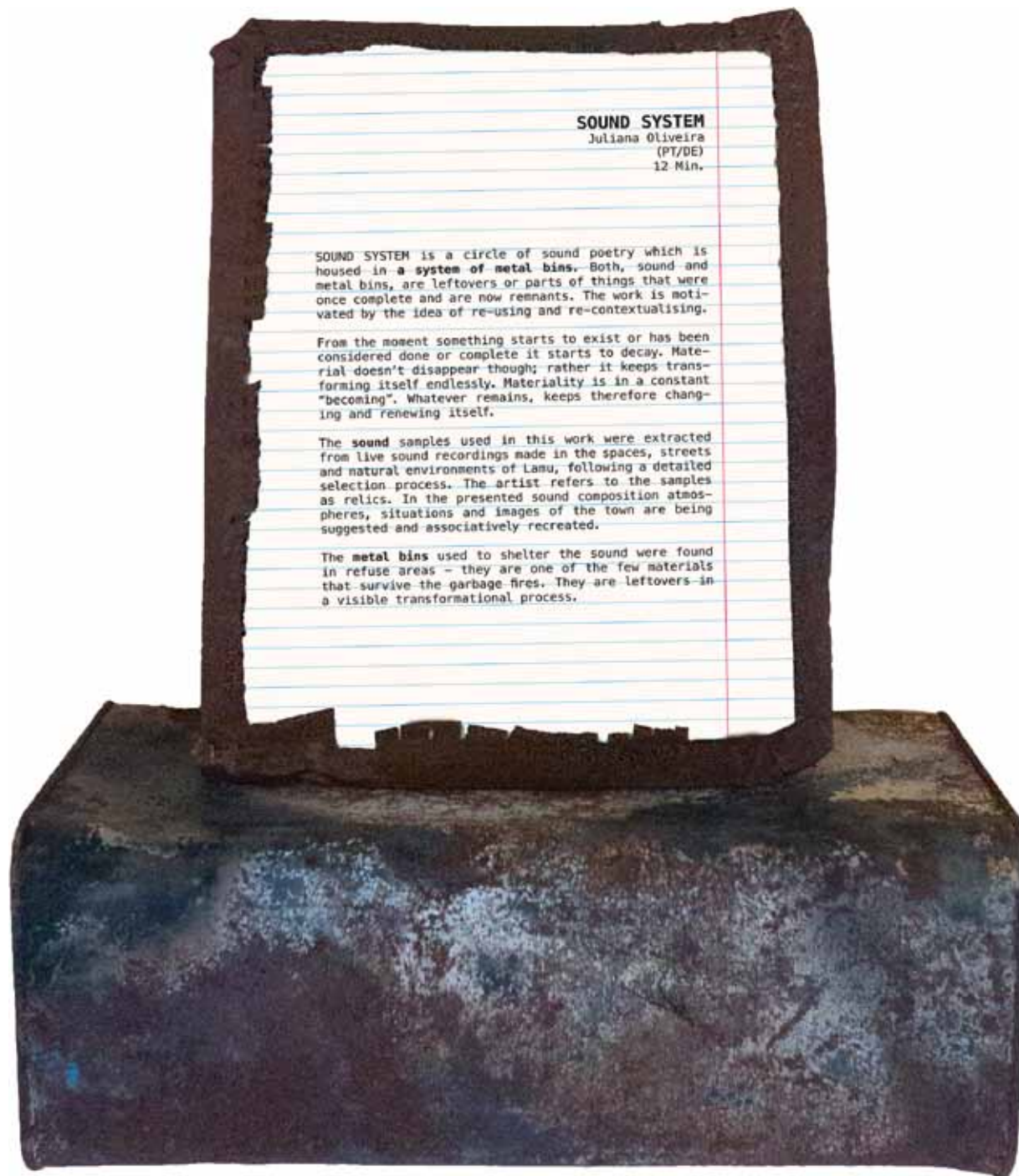


**Juliana Oliveira.** \*1985, Portugal

Lamu Sound System.  
Sound installation 12 min.,  
metal bins, plywood







Lamu Sound System.  
Sound installation 12 min.,  
metal bins, plywood













**Joachim Sauter.** \*1956, Germany

























Ongoing project: Five portrait statues of Manda stone carriers.  
African Mahogany, height approx. 270 cm













**Paul Taylor.** \*1957, United Kingdom



From the Roof. Oil on canvas board, 20 x 30 cm





Shela Alley.  
Oil on canvas board,  
16 x 10 cm  
134



Frangipani.  
Oil on canvas board,  
16 x 10 cm



Peponi Beach.  
Oil on canvas board,  
26 x 30 cm



Shela Moonlight.  
Oil on canvas board,  
26 x 30 cm





**Svetlana Tiourina.** \*1964, Russia







Lamu Fort Square. Oil on canvas, 145 x 235 cm



Swahili Wedding. Oil on canvas, 145 x 235 cm





Lamu Seafront. Oil on canvas, 145 x 235 cm





Swahili Canoe. Oil on canvas, 145 x 235 cm





**Karin Voogd.** \*1962, Netherlands



Ongoing project: Maktaba ya Sanaa / An Art Library for Lamu.  
Performance, chicken cage, art books, art lessons with Lamu school kids









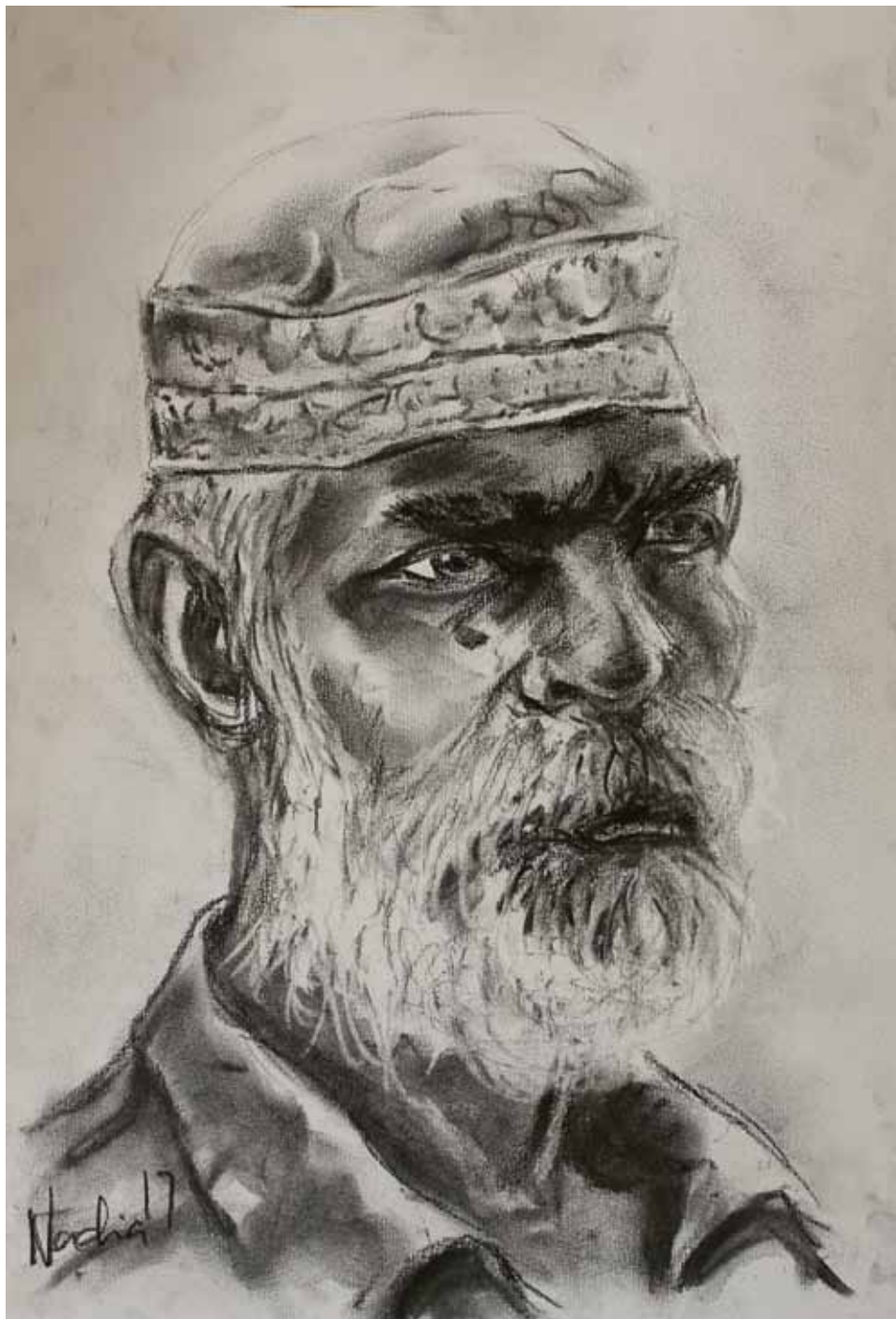


**Nadia Wamunyu.** \*1993, Kenya



Shela Street.  
Oil on canvas,  
50 x 50 cm



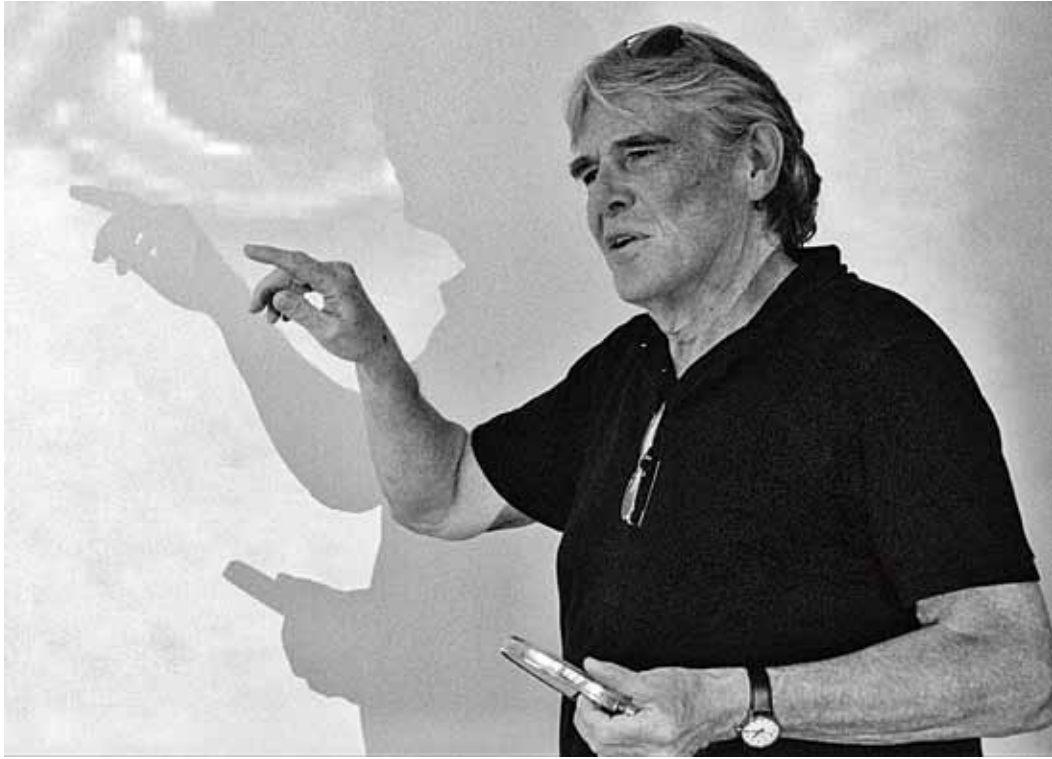


Mzee Ali.  
Charcoal on paper,  
42 x 30 cm



Shela  
Early Sunrise.  
Oil on canvas,  
60 x 75 cm





**Dale Webster.** \*1949, United Kingdom



Girl on a Street. Oil on card, 33 x 40 cm





Josephine. Oil on card, 40 x 33 cm



Waiter. Oil on card, 33 x 40 cm



Lukman. Oil on card, 33 x 40 cm

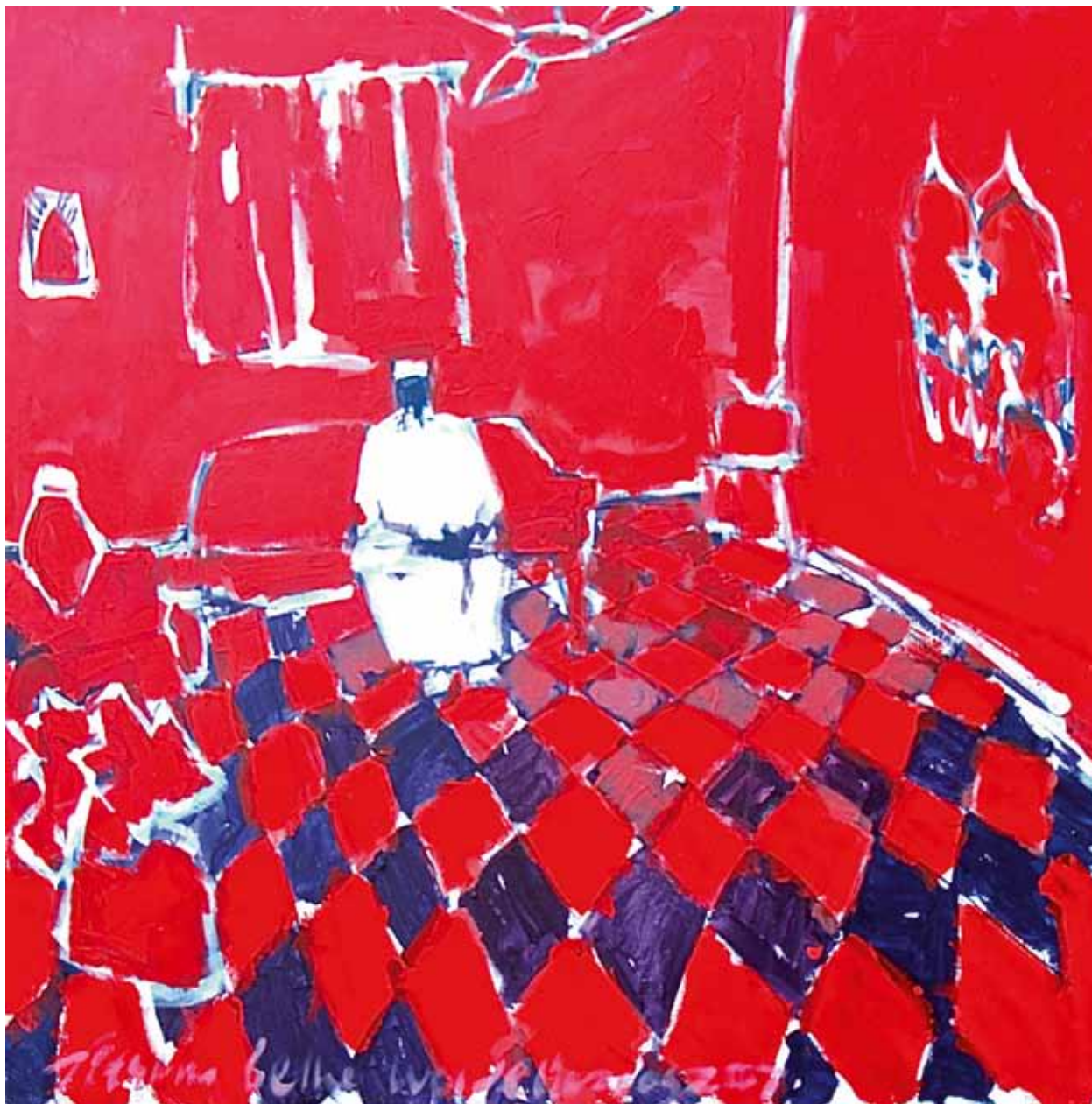




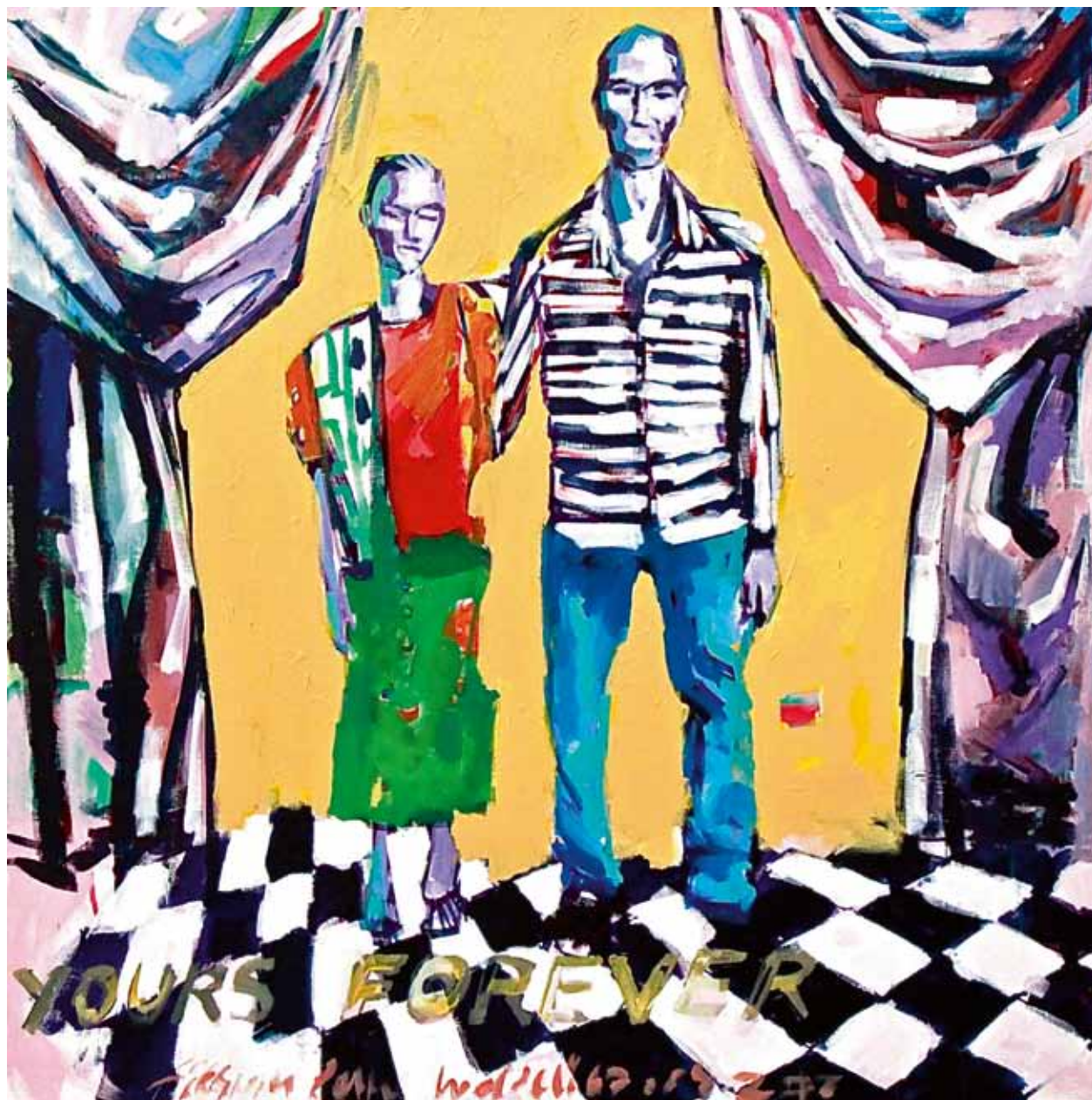
**Fitsum Berhe Woldebianos.** \*1979, Eritrea







Lamu 70s I. Acrylic on canvas, 120 x 120 cm

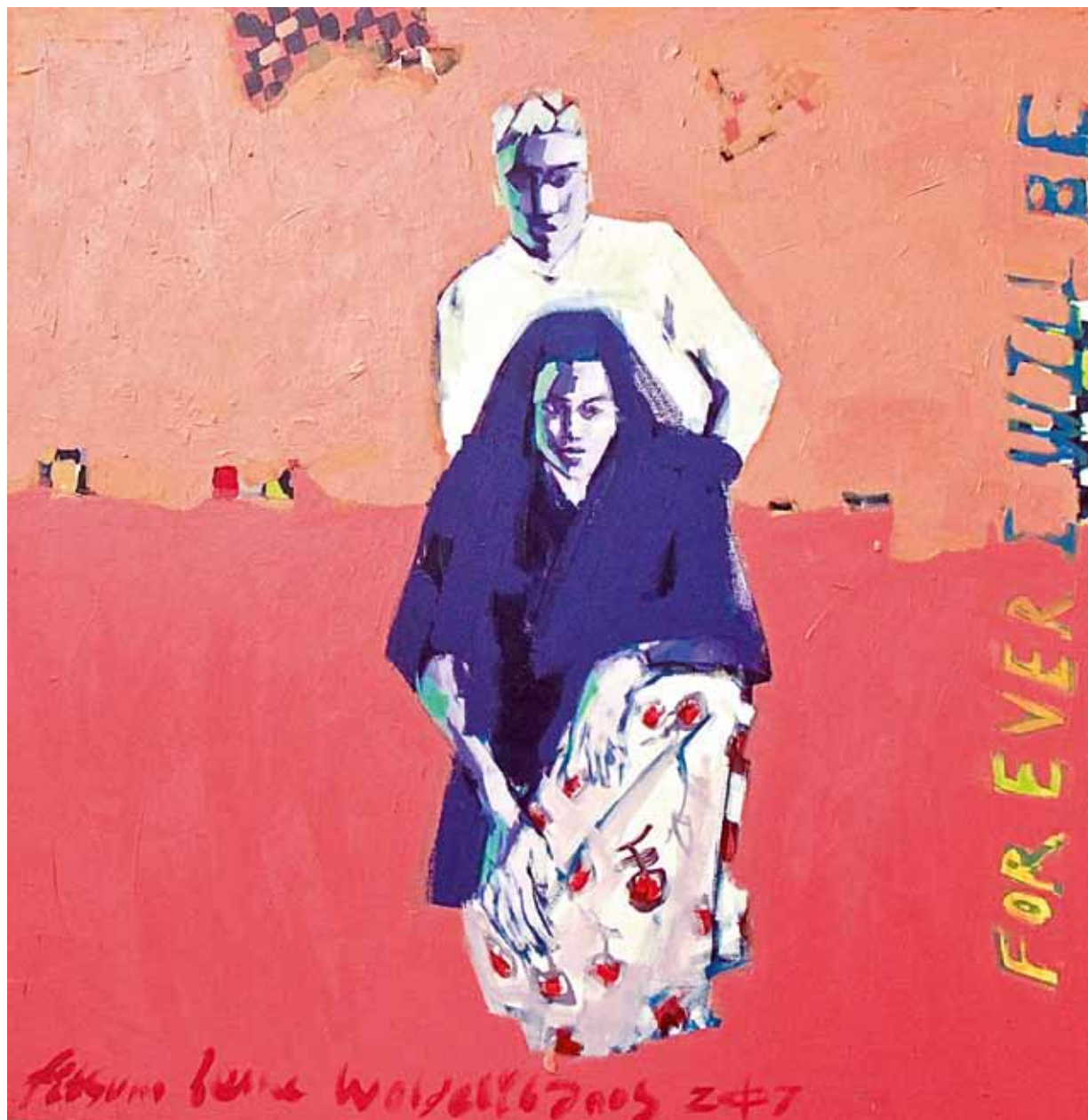


Lamu 70s II. Acrylic on canvas, 120 x 120 cm



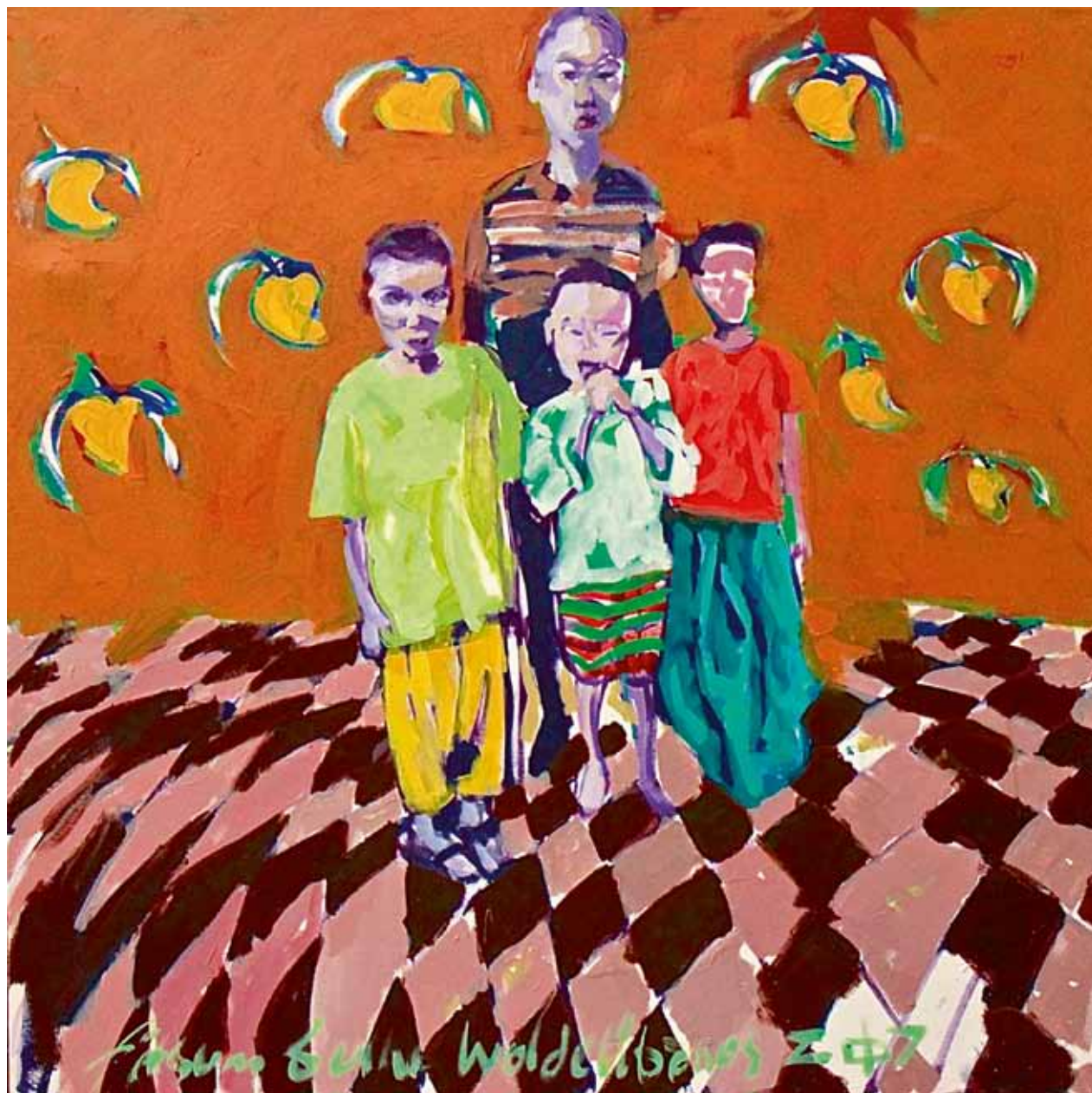


Lamu 70s III. Acrylic on canvas, 120 x 120 cm



Lamu 70s IV. Acrylic on canvas, 120 x 120 cm





Lamu 70s V. Acrylic on canvas, 120 x 120 cm



Lamu 70s VI. Acrylic on canvas, 120 x 120 cm









Special thanks to National Museums of Kenya and curator Haij Mohamed Ali  
for providing exhibition space and  
further support in a national monument.

Special thanks to Rachael Feiler of Diamond Beach Eco-Resort  
for her passion to invite Kenyan musicians and bands to Lamu and  
providing infrastructure for live concerts on a remote island.

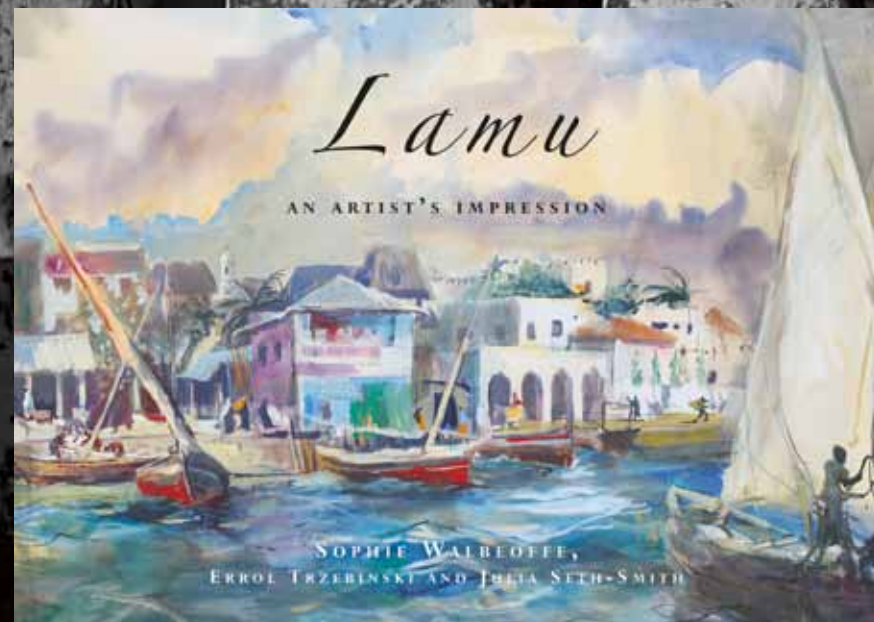
Special thanks to the Lamu County Ministry of Tourism  
for funding the music department of the Lamu Art Festival 2017.

## LAMU SMILES



People and Places by Roland Klemp

Lamu Smiles  
People and Places  
Roland Klemp, Photography  
Hardcover, 130 Pages, 20 x 25 cm  
Book available on [www.blurb.com](http://www.blurb.com)



Lamu — An Artist's Impression  
Sophie Walbeoffe, Watercolour  
Errol Trzebinski and Julia Seth-Smith, Text  
Hardcover, 100 Pages, 15 x 21 cm  
Contact: [info@lamupaintersfestival.org](mailto:info@lamupaintersfestival.org)



## art LAMU 2017

Residencies of 23 International Artists Jan/Feb 2017

Exhibition Lamu Fort February 16th–19th 2017, Lamu, Kenya

Director/Curator – Herbert Menzer

Photographers – Roland Klemp, Eric Gitonga

Author – Julia Seth-Smith

Festival Secretary – Camilla McConnell

General Assistance – Coltrane McDowell

Senior Field Manager – Omar Mafreezer

Field Managers – Omar Mzee, Hamisi Patani

Baitil Aman Gallery – Grace Sidi Neema

Catering – Evance Shamwama, Kahindi Baya

Baitil Aman Hotel – Husna Hussein,

Milton Elado, Kahindi Ngumbao

Jannatan Hotel – Hamid Mohammed, Baraka Amos

Layout – Dirk Rose, Herbert Menzer



Front cover Peter Ngugi: Details of "People Have Ears" series

Photos © Roland Klemp & Eric Gitonga, Text © Julia Seth-Smith

All photographs, photographs of paintings and text are copyrighted and protected under international copyright laws. They may not be reproduced in any form, published or manipulated without prior written permission.





[www.lamupaintersfestival.org](http://www.lamupaintersfestival.org)